



BRIEFING SESSION

**APPOINTMENT OF A SERVICE PROVIDER FOR THE
CREWING AND MANNING, TECHNICAL AND
COMMERCIAL MANAGEMENT OF THE POLAR SUPPLY
AND RESEARCH VESSEL S.A. AGULHAS II AND
ENVIRONMENTAL RESEARCH VESSEL ALGOA FOR 60
MONTHS.**

23 April 2025

East Pier, V&A Waterfront, Cape Town

PURPOSE OF THE BID

To appoint a service provider for the crewing and manning, technical and commercial management of the Polar Supply and Research Vessel S.A. Agulhas II and Environmental Research Vessel RV Algoa for a period of 60



forestry, fisheries
& the environment

Department:
Forestry, Fisheries and the Environment
REPUBLIC OF SOUTH AFRICA



OBJECTIVES OF THE BID

The appointment of the service provider will enable the DFFE to access/acquire necessary ship management services, qualified crew and optimally operating infrastructure in order to:

- Perform the logistics mandate, required science for Antarctica and the sub-Antarctic Islands effectively and in a safe manner, and
- Undertake the mandated scientific research in the ocean space surrounding South Africa as well as around Antarctica and the Southern Ocean.



S.A. Agulhas II

-Mobile scientific platform

-Logistics

-Oceanography



forestry, fisheries
& the environment

Department:
Forestry, Fisheries and the Environment
REPUBLIC OF SOUTH AFRICA

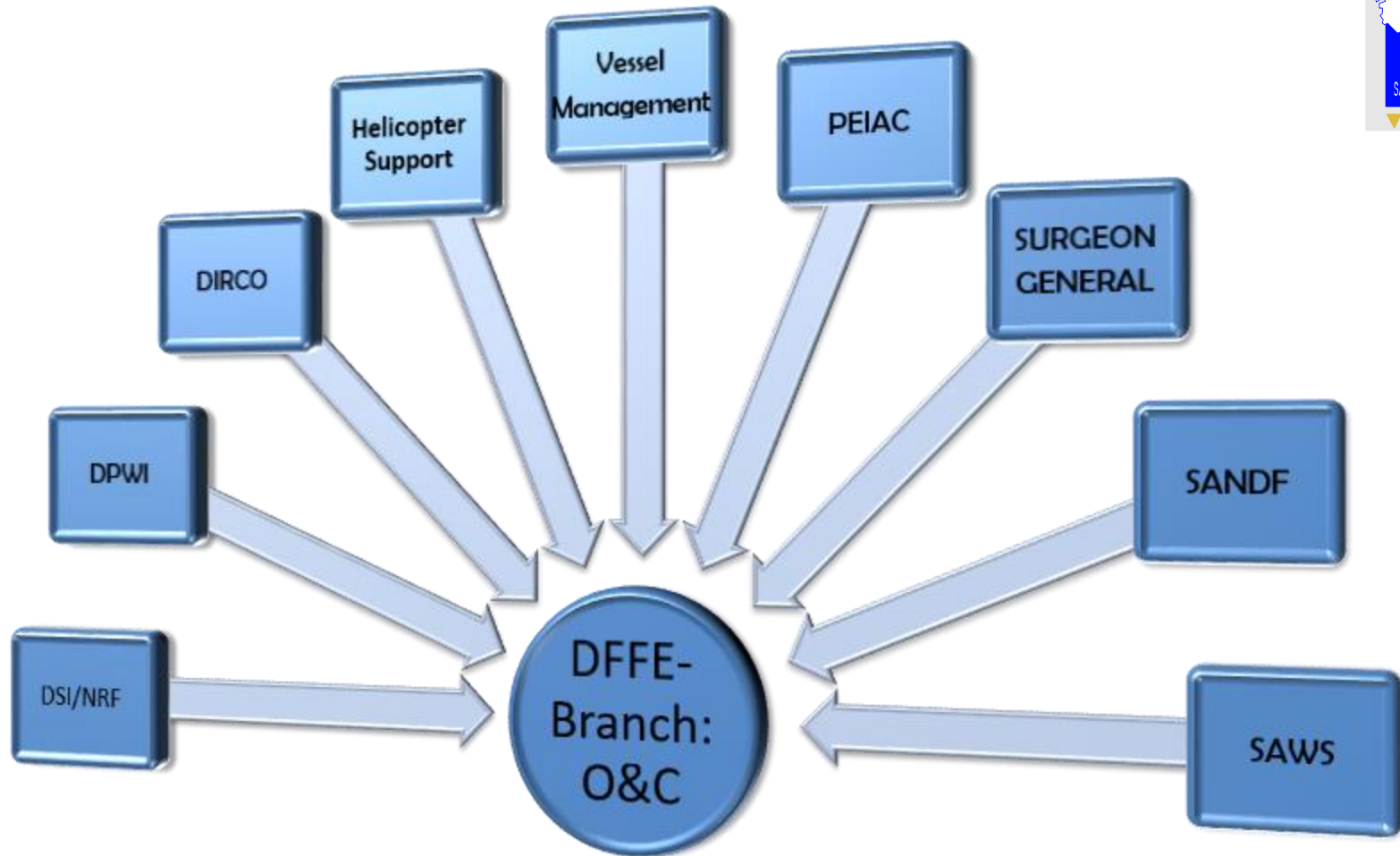


SA AGULHAS II

- SA Agulhas II is an ~R1.8Bn investment and state asset
- International Antarctic programs – Council of Managers of National Antarctic Programs (COMNAP)
- Dronning Maud Land Air Network Project (DROMLAN) and Dronning Maud Land Ship (DROMSHIP)(collaborations)
- Commercial Charters and Scientific Charters
- South African Maritime Safety Authority (SAMSA) – Rescue operations
- Crewing And Manning
- Shipping/clearing agents



SANAP Stakeholders



forestry, fisheries
& the environment

Department:
Forestry, Fisheries and the Environment
REPUBLIC OF SOUTH AFRICA



Research Base Locations



forestry, fisheries
& the environment

Department:
Forestry, Fisheries and the Environment
REPUBLIC OF SOUTH AFRICA



REQUIREMENTS AT EACH BASE

Antarctic logistics

ANTARCTICA:

Tanks, Sleds & Containers



Fuel handling operation at the Ice Shelf with Vessel



forestry, fisheries
& the environment

Department:
Forestry, Fisheries and the Environment
REPUBLIC OF SOUTH AFRICA



MARION AND GOUGH ISLANDS:

A large helicopter is suspended in the air by a crane cable, positioned over the deck of a ship. Several crew members in high-visibility gear are visible on the deck, and a yellow crane structure is partially visible on the right. The background shows a cloudy sky and the sea.



RV ALGOA



forestry, fisheries
& the environment

Department:
Forestry, Fisheries and the Environment
REPUBLIC OF SOUTH AFRICA



History and Specifications of RV Algoa

- Built in 1972 as a French fishing vessel
- 1991 – 1993: acquired and renamed fisheries research ship *Algoa* (FRS *Algoa*)
- Call Sign: ZR4311
- Flag: South Africa [ZA]
- Gross Tonnage: 759
- Summer DWT: 52 t
- Length Overall x Breadth Extreme: 52.55m x 10.8 m
- Home Port: Cape Town

(marinetraffic.com)



forestry, fisheries
& the environment

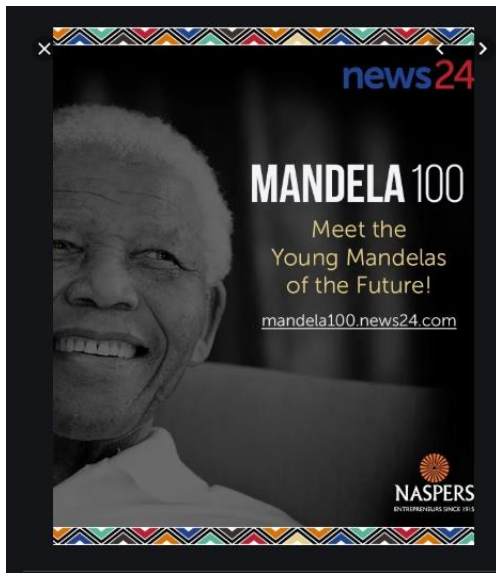
Department:
Forestry, Fisheries and the Environment
REPUBLIC OF SOUTH AFRICA



Achievements...and (**inter**)national recognition



ZOLEKA FILANDER



2019 100 Most
Influential Young
South Africans



forestry, fisheries
& the environment

Department:
Forestry, Fisheries and the Environment
REPUBLIC OF SOUTH AFRICA



Main Functions of RV *Algoa*

- A primary platform for undertaking environmental research surveys;
- Plays a vital role in maintaining the integrity of long-term data time series that is invaluable to understanding the marine environment, underlying ecosystem processes and its resources.

The main functions of the RV *Algoa* include:

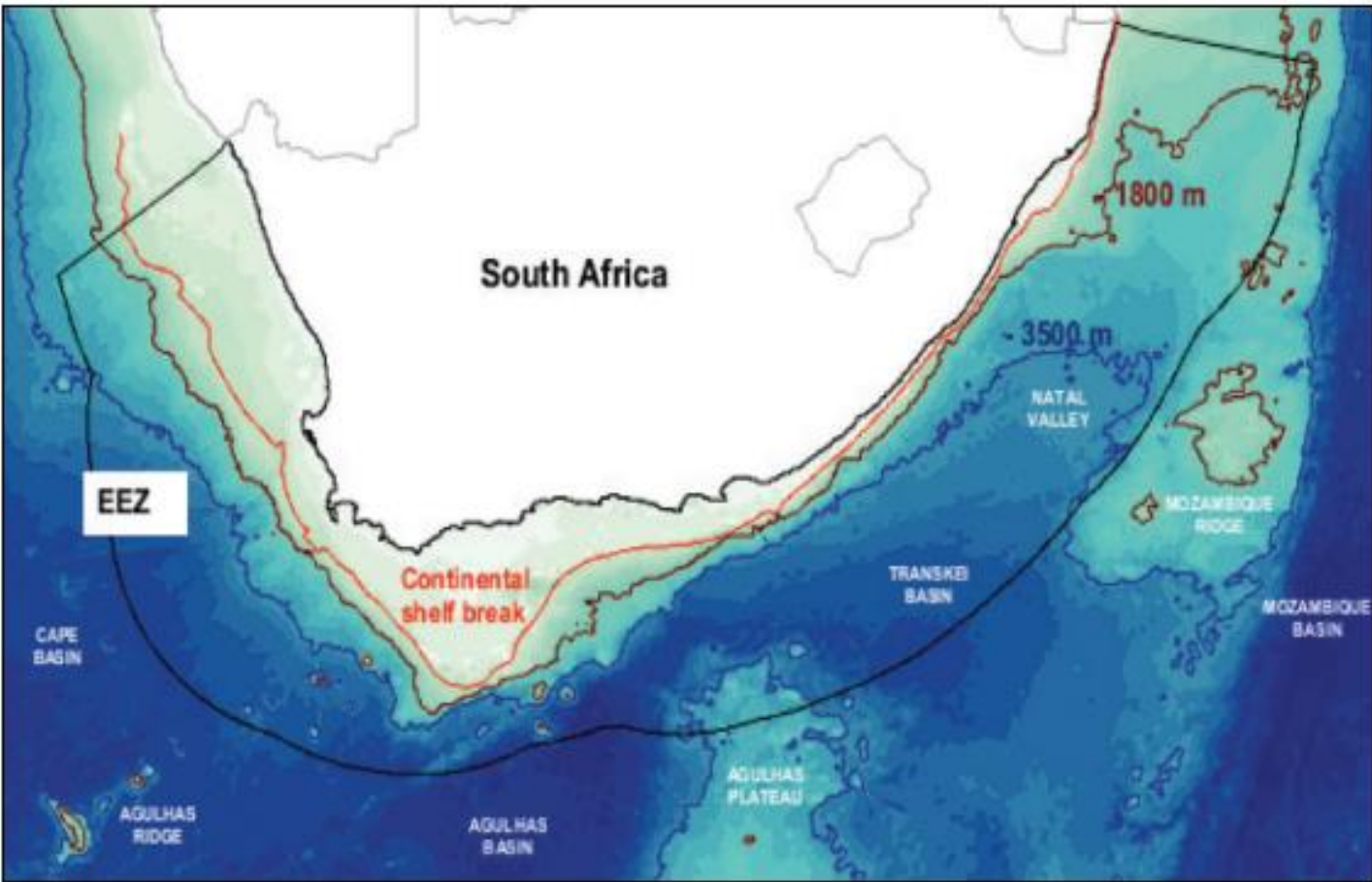
- i. conduct scientific research to understand environmental processes in the marine environment as a result of climate variability and climate change;
- ii. deploy and service ocean observation platforms, such as buoys, moorings, etc. around South Africa;
- iii. conduct research and surveys on ocean biodiversity in deep ecosystem and marine top predators, such as seabirds, whales, sharks, plankton, etc as indicators of ecosystem functioning and change.



Extent of RSA Exclusive Economic Zone (EEZ) and the relevant Economic potential

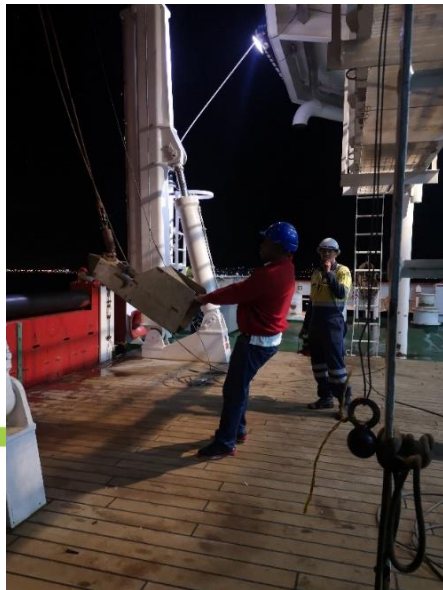
Map: South Africa's Existing Mainland Exclusive Economic Zone ⁵

(The continental shelf break (200m) is shown in red and the 1800m and 3500m contours are shown in brown and blue respectively.)

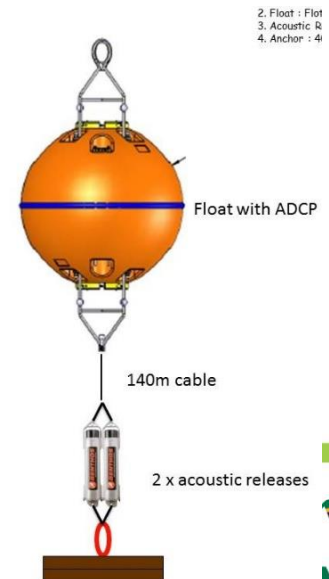
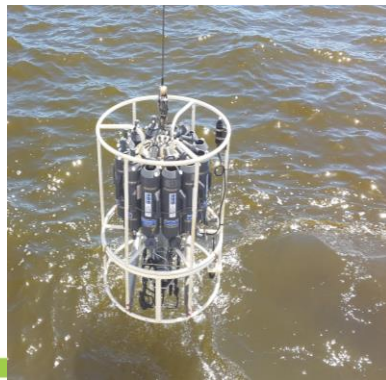


In simple terms, RV Algoa conducts studies on :

- Oceanographic research supporting fisheries – food security.
- Bio-prospecting for pharmaceutical products – benthic biodiversity.
- Understanding ocean processes, South African weather patterns and climate.
- Studies on ocean carbon dioxide absorption – CO₂ sink.
- Oil and gas prospectivity research, other ocean noise, geosciences and seabed mineralogy.



REPUBLIC OF SOUTH AFRICA



POTENTIAL REPLACEMENT OF *RV ALGOA*

(Projected Lifespan: 30-35 years)

- CURRENTLY: Annual allocated vessel operating cost of R 65 million (~180 days/year at sea) at DFFE
- DFFE will be initiating a process to replace the RV Algoa with a fully equipped multi-use research and monitoring vessel built, installed and equipped in South Africa.
- Potential bidders will be requested to be involved in the “project management” aspect of the ship-build.
- Infrastructure capacity development through technology transfer.
- Human capacity development and building training platform for scientists, technicians and maritime cadets



WHY REPLACE RV *ALGOA*?

- The RV *Algoa* is 52+ years old, unreliable and vulnerable;
- Extremely high maintenance and repair cost (mainly customized spare parts).
- An asset used by National departments (DFFE, DSI, DMRE, DoT, etc.) and/or their related agencies (CSIR, SAEON, SAWS, SANBI, SAMSA, PASA, etc)
- Annual usage at 180 to 240 days at sea per year.
- Service schedule is every 2 years, instead of every 5 years .
- Cost of service: 33% of annual operating budget



COSTING

- 8.1 A comprehensive offer **per Vessel** must be provided inclusive of all costs, expenses, and all applicable taxes. Note: Travelling costs and time spent or incurred between home and the office of the project manager and the DFFE office will not be for the account of the DFFE.
- 8.2 A comprehensive offer must be provided in the same envelope as the technical proposal inclusive of all Management fees, Crew Costs, Vessel Operating Costs, Accommodation, Discounts and Commissions, all disbursement costs, expenses, and VAT.

NB: Please ensure that all costing is provided per Vessel. (Annexure A - Price Schedule /guidance: **Service provider must quote for all activities as included in the Pricing Schedule unless indicated otherwise).**

- 8.3 All prices must be in South African Rands (ZAR) inclusive of VAT.
- 8.4 Management Fees
- 8.5 Crew Costs
- 8.6 Vessel Operating Costs
- 8.7 Discounts and Commissions
- 8.8 Accommodation
- A comprehensive budget for the manning, management, and maintenance of the Polar Supply and Research Vessel S.A. Agulhas II and Environmental Research Vessel RV Algoa for five (05) consecutive years for Branch: Ocean and Coasts. The service provider will be selected based on the evaluation criteria for the work proposed and the cost-effectiveness of the proposed budget. Please note the budget template (Pricing Schedule: 3.3 and Annexure A).



EVALUATION CRITERIA:

- **PHASE 1:**
PRE-COMPLIANCE
- **PHASE 2:**
MANDATORY REQUIREMENTS
- **PHASE 3:**
FUNCTIONALITY CRITERIA
- **PHASE 4:**
PRICE AND SPECIFIC GOALS

BID EVALUATIONS ESTABLISH PROGRESS FROM PHASE TO PHASE **ONLY** IF RESPECTIVE BIDS MEET **CRITERIA** SET OUT IN EACH PHASE AND AS CONTAINED IN TERMS OF REFERENCE



forestry, fisheries
& the environment

Department:
Forestry, Fisheries and the Environment
REPUBLIC OF SOUTH AFRICA



EVALUATION CRITERIA:

- PHASE 1: PRE-COMPLIANCE**

ITEM NO.	ADMINISTRATIVE REQUIREMENTS	CHECK/ COMPLIANCE
1	Master Bid Document	Provided and bound
2	Electronic Copy (USB)	Same as the master bid document
3	SCM - SBD 1 - Invitation to Bid	Completed and signed
4	Tax Compliance and CSD Registration	Attached CSD registration number/ Proof of CSD registration and/or SARS Tax Pin
5	SBD 3.3 - Pricing Schedule	Completed
6	SCM - SBD 4 – Bidders Disclosure	Completed and signed
7	SCM - SBD 6.1 - Preference Points Claim Form in terms of the Preferential Procurement Regulations 2022	Completed and signed
8	In case of bids where Consortia / Joint Ventures, Consortia/Joint Venture agreement signed by both parties must be submitted with a bid proposal	JV agreement completed and signed, if applicable
9	Consent and indemnity	Completed and signed



• PHASE 2: MANDATORY REQUIREMENTS:

MANDATORY REQUIREMENTS

Three-year audited Financial Statements for the company in accordance with the International Accounting Standards (IAS) Standard 1 Presentation of Financial Statements (International Financial Reporting Standards) consisting of (a) Statement of Financial Position, (b) Statement of comprehensive income, (c) Statement of changes in equity for the period, (d) Statement of cash flows and (e) Notes, comprising a summary of significant accounting policies and other explanatory notes comparative information prescribed. In the case of the Close Corporation or those not required by law to have audited statements, the three-year financial statements must be signed by the Managing Member of the Company/CC.

Attendance of Compulsory Briefing Session



forestry, fisheries
& the environment

Department:
Forestry, Fisheries and the Environment
REPUBLIC OF SOUTH AFRICA



• PHASE 3: FUNCTIONALITY CRITERIA

- Only bid proposals that meet the mandatory requirements will be evaluated on functionality criteria.
- The bidder must score a minimum of 80% during Phase 3 (Functionality) of the evaluation to qualify for Phase 4 of the evaluation, where only points for the price and performance points will be considered,
- The following values / indicators will be applicable when evaluating functionality.



• PHASE 3: FUNCTIONALITY CRITERIA

- (1) A proposed project plan, methodology and management of the project in the field of ship management services, qualified crew, and enabling infrastructure in order to perform the logistics mandate for research cruises as well as islands, high seas or Antarctica and the sub-Antarctic Islands effectively and in a safe manner. **(20%)**

Bidders are required to provide a detailed project plan with intermediate, and final outputs and identified timeframes/ milestones outlining:

- Ship Management services capability,
- description of qualified crew and officers on Vessels to be managed under the contract,
- additional support to ensure the mandate of research cruises and Antarctic and Sub-Antarctic Island logistics are achieved effectively and in a safe manner.

(2) A qualification of the Project Team Leader to be assigned to the project in ship management. (20%)

- Bidder(s) are required to present academic qualifications of the assigned Project Team Leader showing NQF Level and the qualification.
- Bidder(s) should submit curriculum vitae as well as certificates of the Team Leader proposed to be employed on the project.
- Curriculum vitae are to include specific details of these individuals including, inter alia, relevant experience and to include contactable references and experience in ship management services



(3) Experience of Project Team Leader (Key Expert 1) to be assigned to the project. (20%)

- Bidder(s) are required to present a project team leader to demonstrate their necessary managerial and technical expertise to undertake and successfully complete the project.
- Bidder(s) should submit curriculum vitae for the Project Team Leader proposed to be employed on the project.
- Curriculum vitae are to include specific details of these individuals including, inter alia, relevant experience and to include contactable references and experience in ship management services (Crewing and Manning, Technical and Commercial Management).



**(4) Enabling supporting infrastructure such as Offices, ship equipment & consumable stores warehouse/storage, and Information technology/data centre (Bidders are expected to submit proof of premises/accommodation.)
(20%)**

- Bidder(s) are required to submit/ attach evidence of enabling supporting infrastructure such as offices, ship equipment & consumable stores, and Information technology/data centre.
- Bidders are expected to submit proof of premises/accommodation. Proof must include - documentation on proof of ownership (Title Deed) or signed lease agreement with a text description of premises which should include video



(5) The service provider's experience and track record in the field of Ship Management (Technical Management, Crew and Manning Management and Commercial Management services) (20%)

- Bidder(s) are required to demonstrate relevant experience and competency of the company for all successfully completed projects.
- Bidder must submit full details of reliable contactable duly signed positive references letters where successfully completed projects were done in ship management services.
- Reference letters received from clients must be on client letterhead, indicating the service type delivered, the value of the contract/project that the bidder undertook as well as the time period with stipulated start and end dates of the service.

Reference letters for ship management including details on but not limited to

- Crewing and Manning Management
- Commercial Management,
- technical management with
- environmental considerations in ship management



forestry, fisheries
& the environment

Department:
Forestry, Fisheries and the Environment
REPUBLIC OF SOUTH AFRICA



IMPORTANTLY AS CONTAINED IN THE TERMS OF REFERENCE

ANNEXURE A - PRICING SCHEDULE INCLUDED (PER VESSEL)

ANNEXURE B - CV TEMPLATE TO BE COMPLETED FOR PROJECT MANAGER

Disclaimer: This presentation does not supersede the contents of the Terms of Reference as per advert.



**forestry, fisheries
& the environment**

Department:
Forestry, Fisheries and the Environment
REPUBLIC OF SOUTH AFRICA



THANK YOU!

- Technical Enquiries please contact:

Name : Ncumisa Mabece

Office Telephone No : (021) 493 7239

E-Mail : Nmabece@dffe.gov.za



forestry, fisheries
& the environment

Department:
Forestry, Fisheries and the Environment
REPUBLIC OF SOUTH AFRICA

