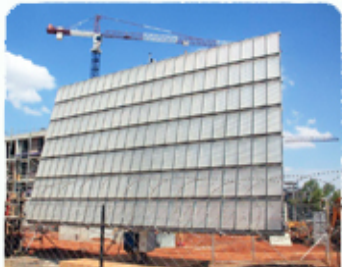


# Tracking the transition to a climate resilience society

13 November 2014



Climate Change and Air Quality



**environmental affairs**

Department:  
Environmental Affairs  
REPUBLIC OF SOUTH AFRICA



# What to track in a climate resilient society?

- The extent to which considerations of climate resilience are integrated into planning process
- Routine assessment of climate risk in planning processes
- Government capacity to coordinate and mainstream climate resilience
- Extent to which vulnerable households and communities use climate resilience tools and strategies to respond to emerging climate challenges
- How local structures (municipalities) and business are responding to climate related hazards pre and post disasters
- Rate of recovery



**environmental affairs**

Department:  
Environmental Affairs  
REPUBLIC OF SOUTH AFRICA



# Outcome 10 resilience indicators

- **Sub-outcome 1: Ecosystems are sustained and natural resources are used efficiently**
  - **Action: Integration of ecological infrastructure considerations into land-use planning and decision-making about new developments**  
**Indicators: Percentage of received SDF's reviewed for environmental requirements**



**environmental affairs**

Department:  
Environmental Affairs  
REPUBLIC OF SOUTH AFRICA



# Outcome 10 resilience indicators

- **Sub-outcome 2: An effective climate change mitigation and adaptation response**
  - **Action: Development of sector adaptation strategies/plans completed**  
**Indicator: Number of sector adaptation strategies/plans completed (5)**
  - **Action: Include climate change risks in the disaster management plans**  
**Indicator: Number of disaster management plans that include climate change risks (40)**
  - **Action: Research in Climate services**  
**Indicators**
    - **Functional climate change research network formalised through MoU's**
    - **Biennial report to Cabinet on state of climate change science and technology**
    - **National framework for climate services established**



**environmental affairs**

Department:  
Environmental Affairs  
REPUBLIC OF SOUTH AFRICA



# Outcome 10 resilience indicators

- **Sub-outcome 2: An effective climate change mitigation and adaptation response**
  - **Action: Monitor, report and verify greenhouse gas emissions**  
**Indicator: Framework for reporting on greenhouse gas emissions by industry developed and reports provided**

## Impact Indicator

- **Reduced vulnerability and risks associated with climate change impacts**  
**2019 Target : Climate Change Response for 5 key sectors implemented**



**environmental affairs**

Department:  
Environmental Affairs  
REPUBLIC OF SOUTH AFRICA



# Key features to enhance resilience

- Political buy in
- Policy, legal and regulatory environment (specially on climate change and disaster risk reduction)
- Mainstreaming, awareness raising, outreach and educational programmes
- Institutional arrangements to support multi-sector co-ordination of climate change adaptation efforts
- Institutional preparedness to respond to climate change
- Scientific knowledge of climate related risks, impacts and vulnerabilities
- Ability to translate science into policy and decision making



environmental affairs

Department:  
Environmental Affairs  
REPUBLIC OF SOUTH AFRICA

