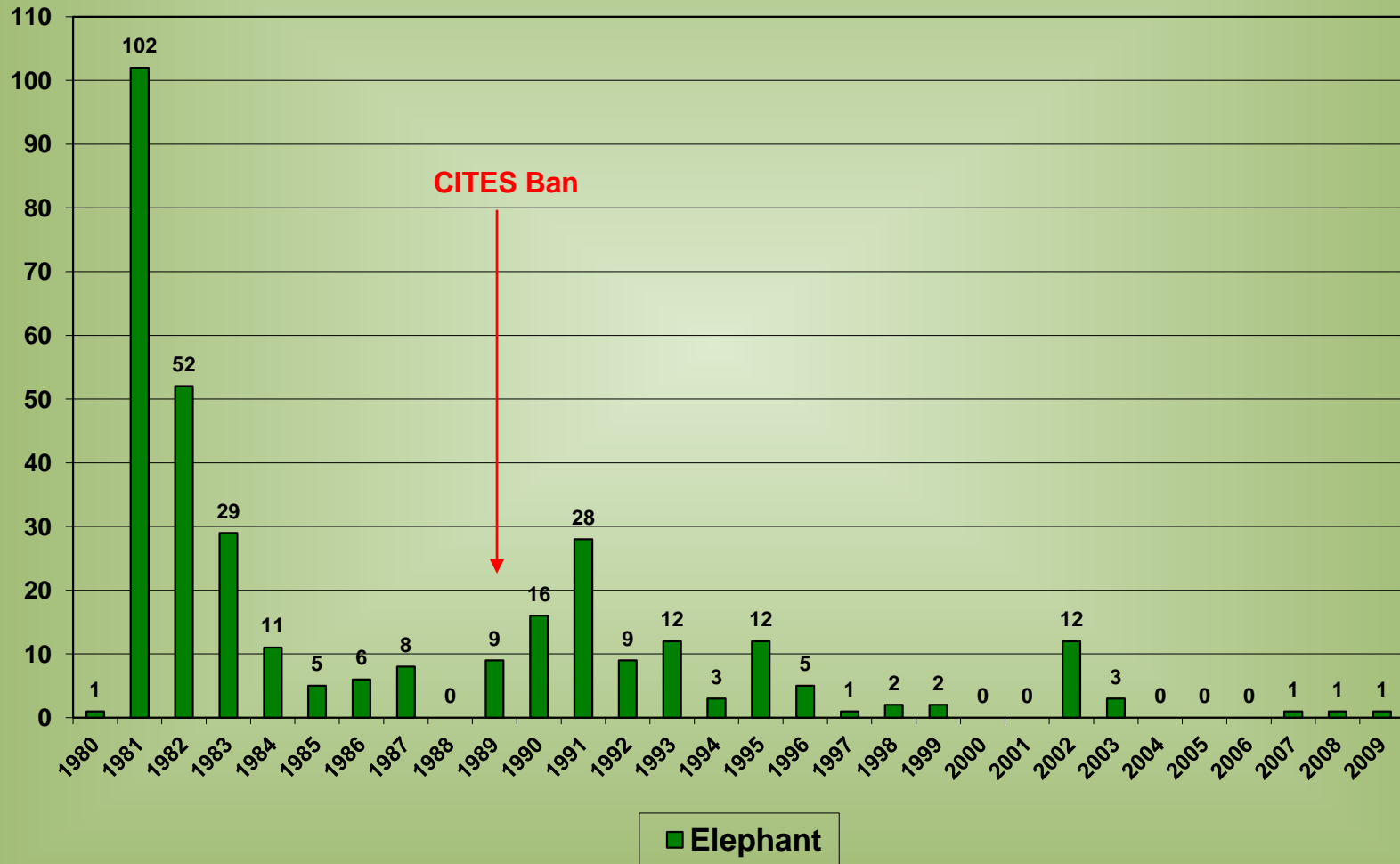


GREATER LEBOMBO CONSERVANCY: Transfrontier Security Area

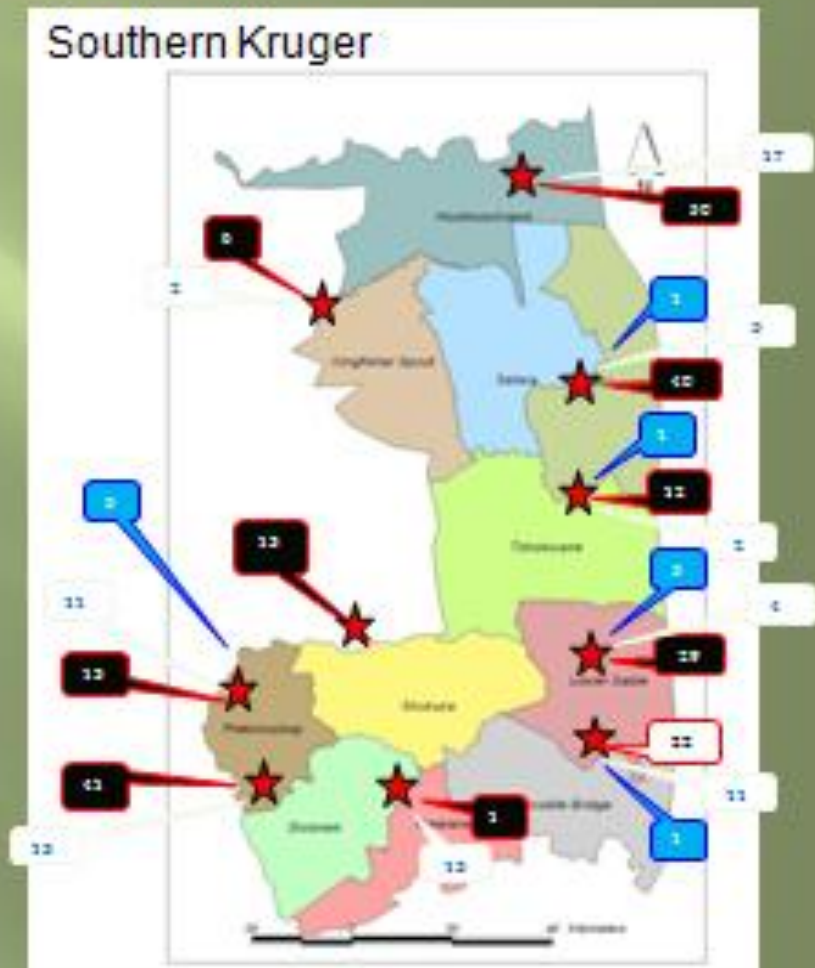
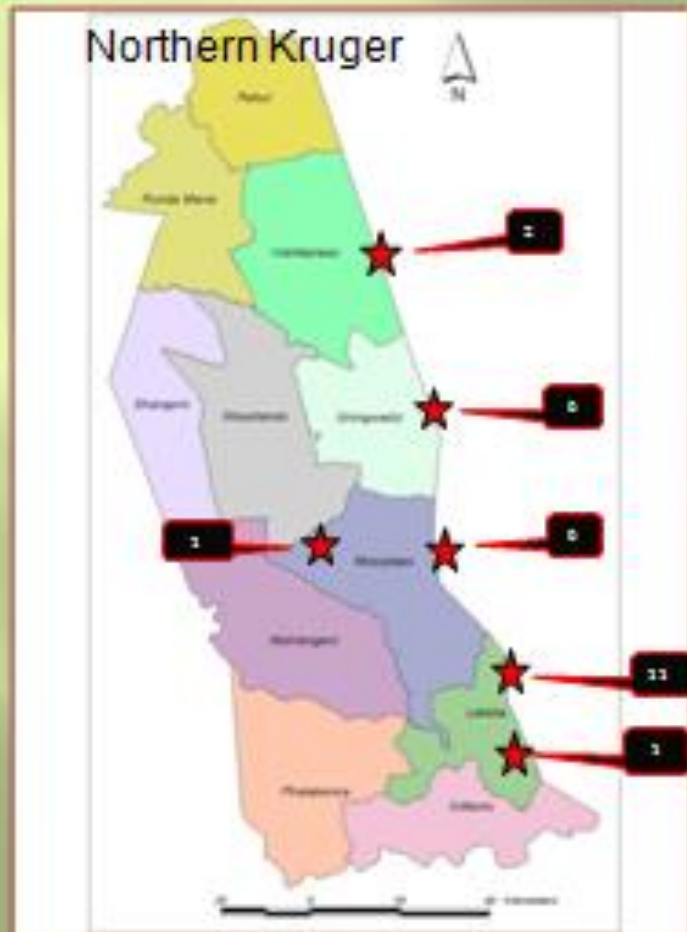


Dr David Mabunda
CEO: SANParks

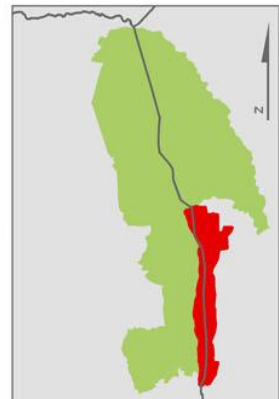
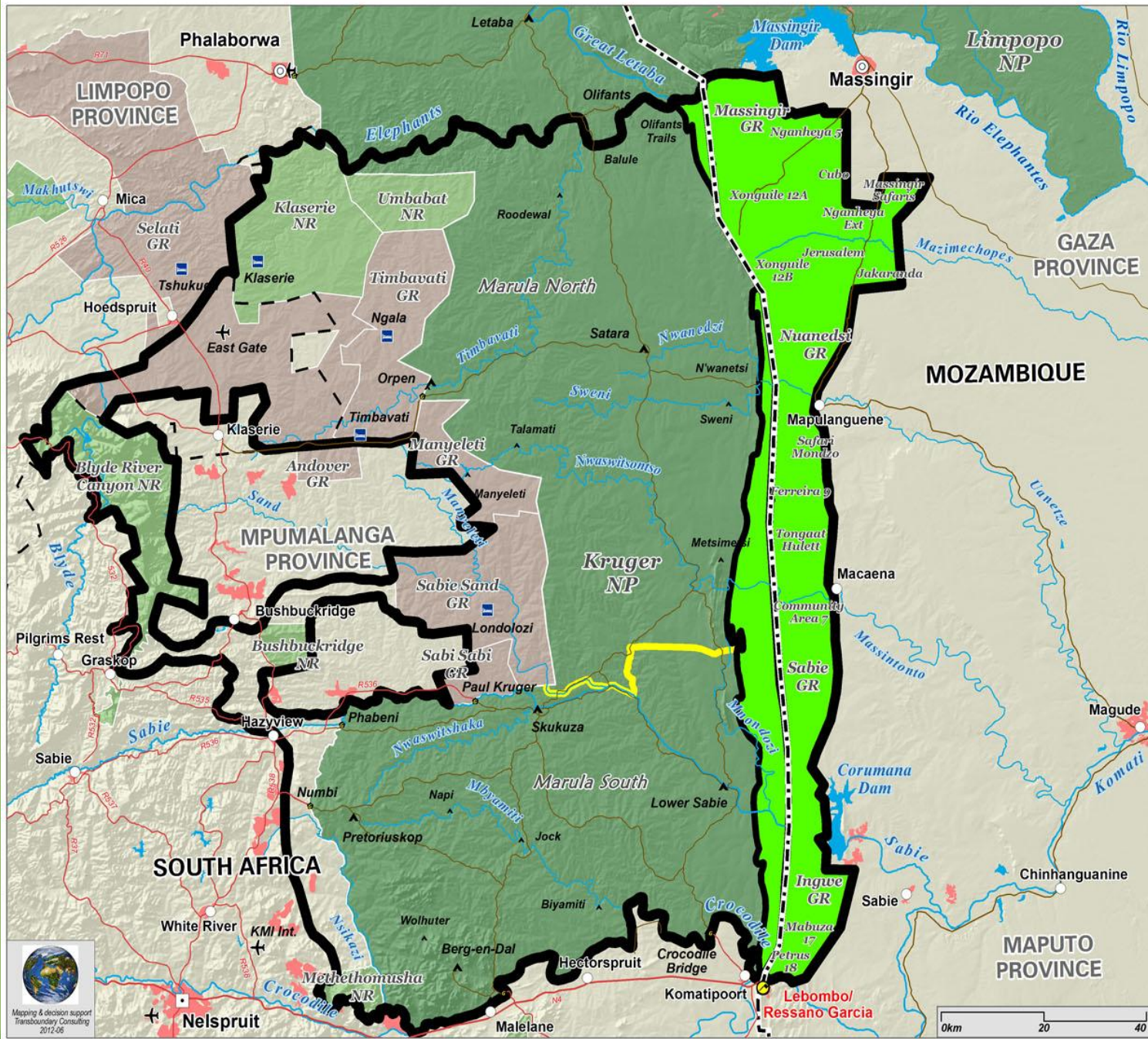
Elephant poaching incidents 1980 – 2009 (Aug)



Rhino Poaching Incidents are concentrated on the Eastern Boundary with Mozambique Jan - Dec 2011 (Jan 2012)



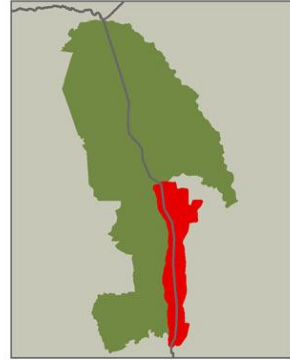
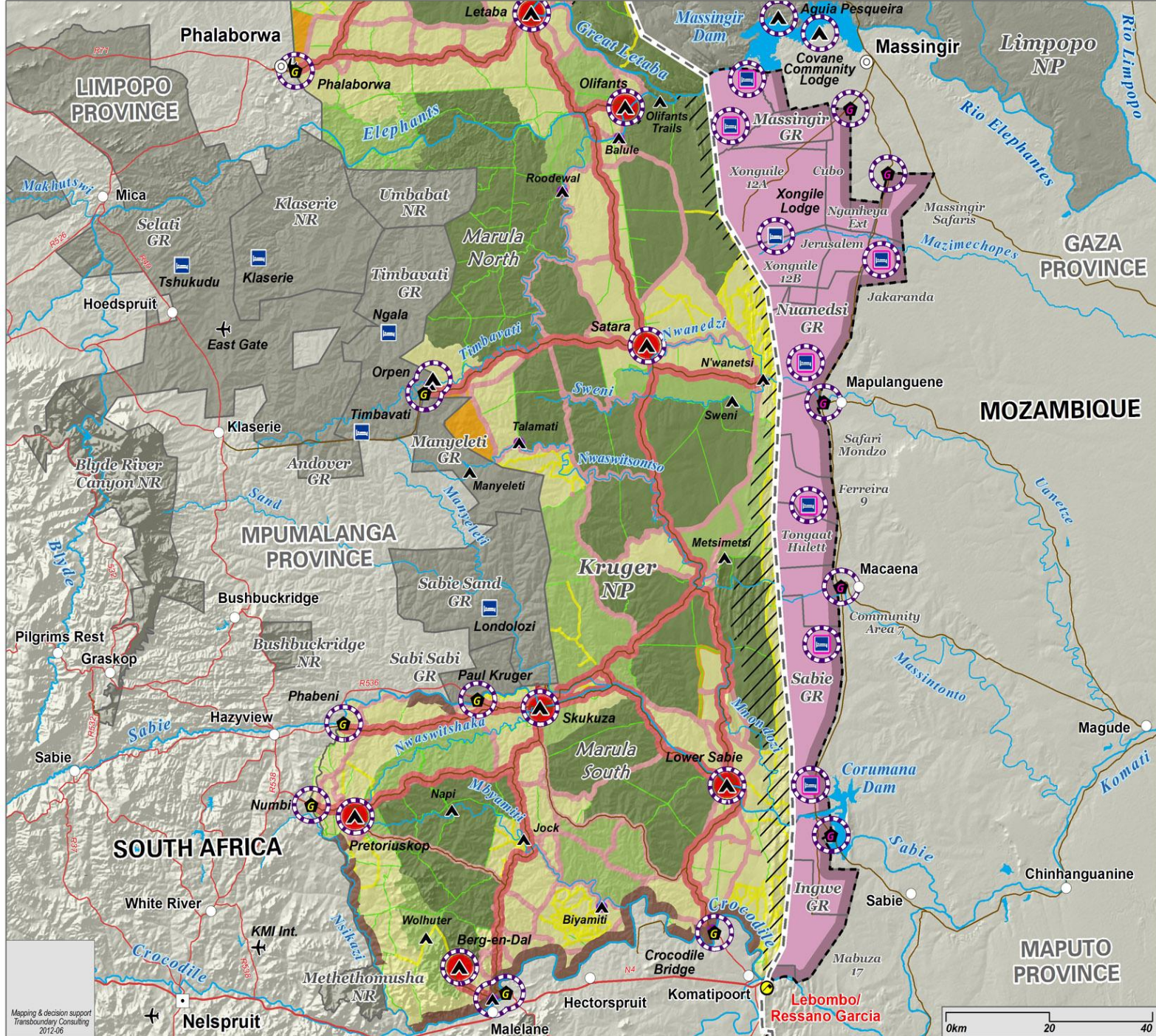




LEBOMBO

Transboundary Security Buffer





LEBOMBO

Transboundary Security Buffer

Tourism developments

- Current developments**
- ▲ Main camp
 - ▲ Bush camp
 - ▲ Lodge
 - G Entrance Gate
- Hypothetical developments**
- Hypothetical Lodge
 - G Hypothetical entrance gate
 - Proposed Greater Lebombo Conservancy (GLC)
 - Proposed PDZ for the GLC (2km)
 - - - Proposed fence along eastern boundary of the GLC
 - /// Proposed security zone inside KNP (Lebombo Mtns)
 - Entrance gates development footprint (3km buffer)

Zonation, Sept 2011

- Main use zones**
- High Intensity Leisure
 - Low Intensity Leisure
 - Primitive
 - Remote
 - Wilderness
- PDZ**
- Peripheral Development Zone (2km)

- Road Reserves**
- Road Reserve-HIL
 - Road Reserve-LIL
 - Road Reserve-Primitive
 - Road Reserve-Remote

