



# APPROACH TO OTHER MITIGATION ELEMENTS

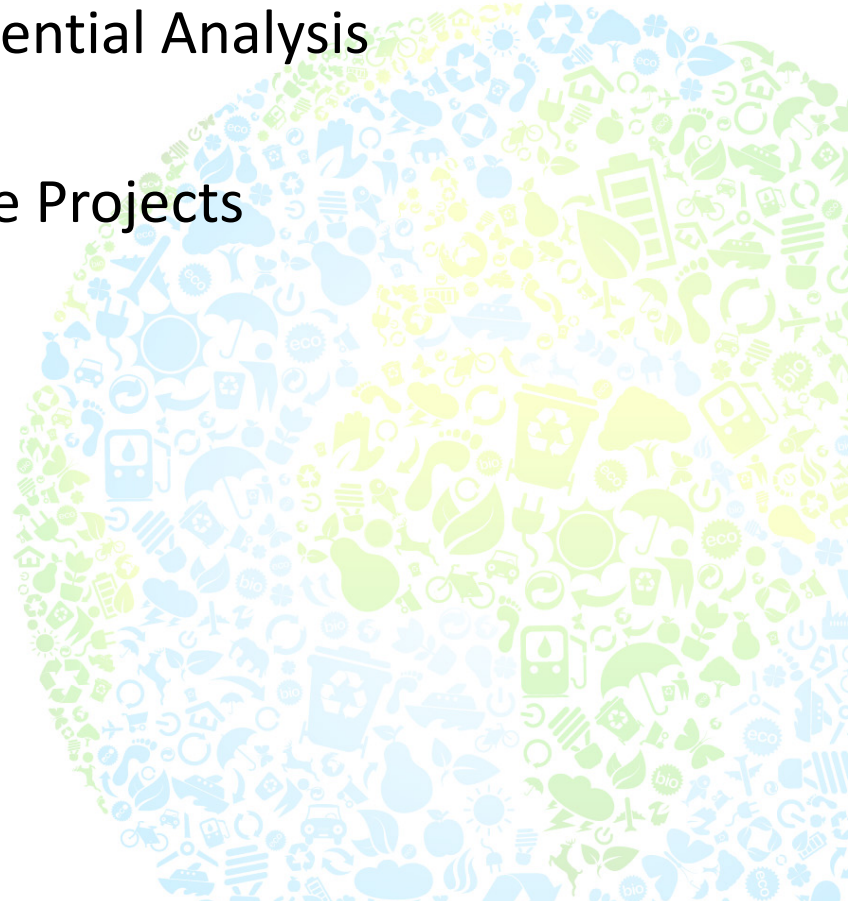
THE NATIONAL CLIMATE CHANGE RESPONSE POLICY





# MITIGATION ELEMENTS

- Overall Approach To Mitigation
- Building From The Mitigation Potential Analysis
- Other Mitigation Chief Directorate Projects
- Timelines





# OVERALL APPROACH TO MITIGATION

Contribution to International Effort to Curb Global Emissions [As a Responsible Global Citizen]

Successful Management of the Development and Poverty Eradication Challenges







# BUILDING FROM THE MITIGATION POTENTIAL ANALYSIS

## – Determination of DERO's

The definition of DERO's will be done based on an in-depth assessment of the mitigation potential, best available mitigation options, science, evidence and a full assessment of the costs and benefits. [outcomes of the Mitigation Potential Work]

## – Mix of Measures

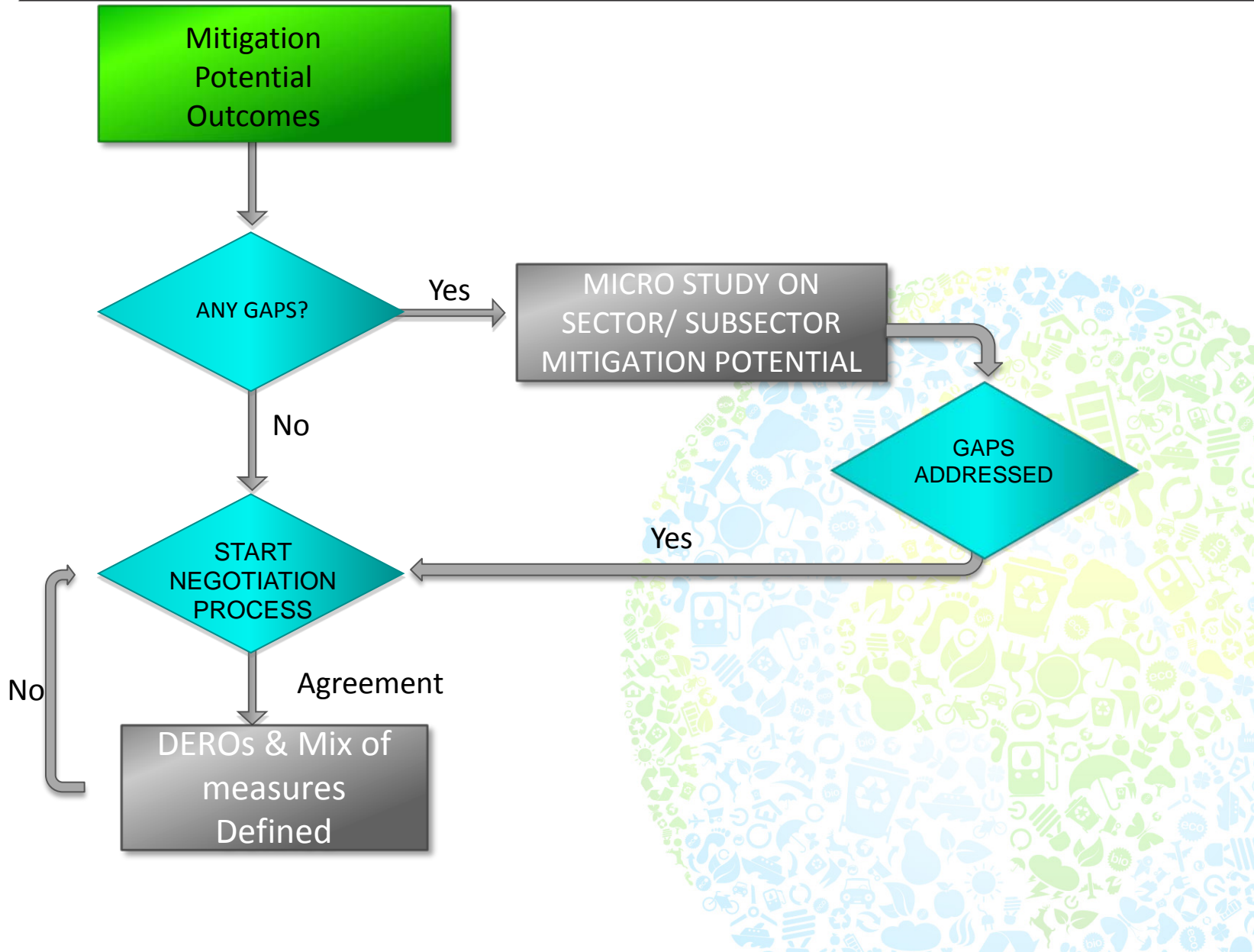
Section 6 of the NCCRP suggests the need to develop and implement a wide range and mix of different types of mitigation approaches, policies, measures and actions that optimise the mitigation outcomes, as well as job creation and other sustainable development benefits. This optimal mix of mitigation actions will be developed to achieve the defined desired emission reduction outcome for each sector and sub-sector of the economy

## – Declaration of GHGs as Priority Pollutants & Mitigation Plans

These set out how DERO's will be achieved [Sectors, Subsectors and Companies]



# DRAFT APPROACH TO DEFINITION OF DERO'S





# APPROACH TO MITIGATION ELEMENTS

- External Facilitation – To ensure that there is fairness and objectivity.
- Scientific Evidence Based – There must be a sound scientific justification of each process
- Consultative – A wide variety of stakeholders will be consulted and will be required to make their inputs on the different processes.
- Consideration of Developmental Issues – In line with our overall approach





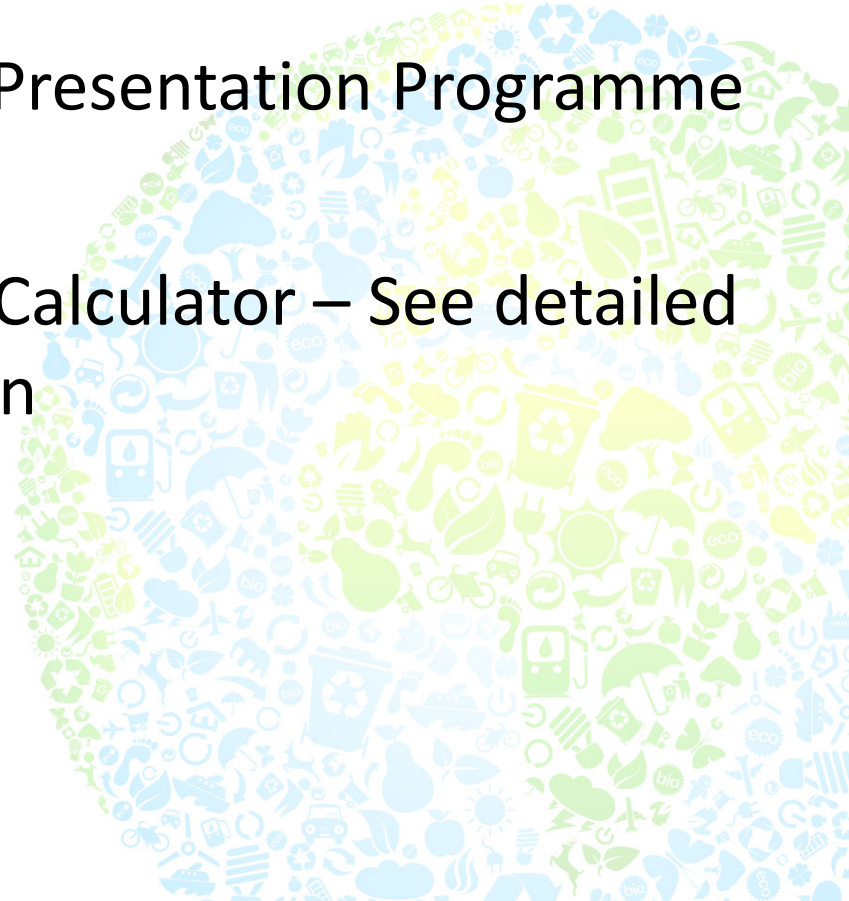
# OTHER MITIGATION PROJECTS

## ● Policy Mainstreaming –

Section 10.1 of the NCCRP emphasises the notion of policy alignment and further recommends a comprehensive review of all government legislation, policy, strategies, plans and regulatory frameworks to ensure a successful implementation of the NCCRP.

## ● Carbon Sinks Analysis – In the Presentation Programme

## ● South Africa's 2050 Pathways Calculator – See detailed presentation in the next session





# INDICATIVE TIMELINES

- Definition of DERO → July 2013 - March 2014
- Mix of Measures → July 2013 – March 2014
- Declaration of GHGs as Priority Pollutant & Mitigation Plan → September 2013 - 2014/15 Financial Year
  - Plans to develop a mitigation plan guideline, a draft document to be produced by the end of 2013/14 financial year.
- Policy Mainstreaming → July 2013 – March 2014
- 2050 Calculator → Final Calculator November 2013
- Carbon Sinks → End March 2014???





**Thank You**

