

Environmental Management Framework for the
Olifants and Letaba Rivers Catchment Areas
(OLEMF)

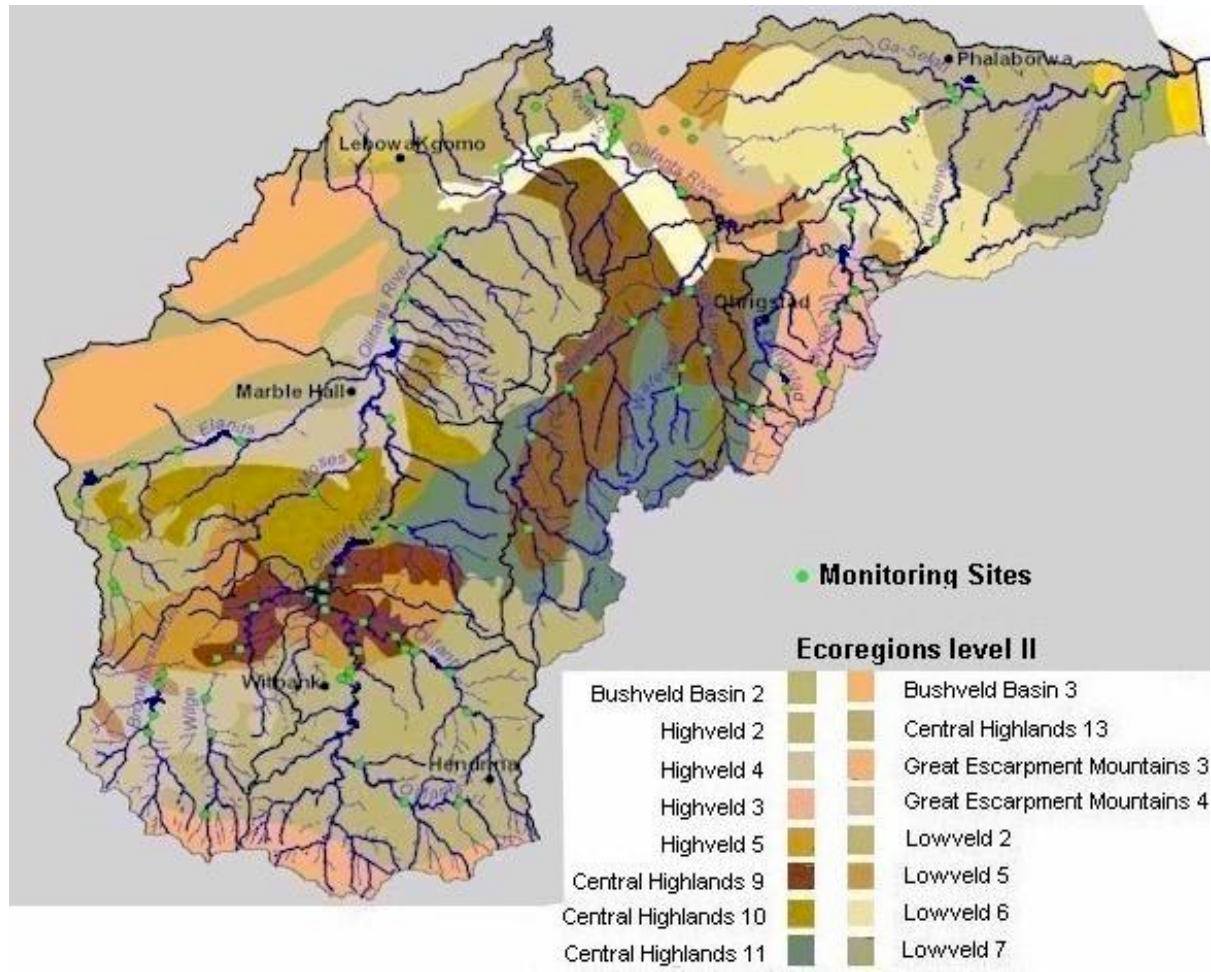
Ecoregion Maps

Environomics
Environmental Consultants

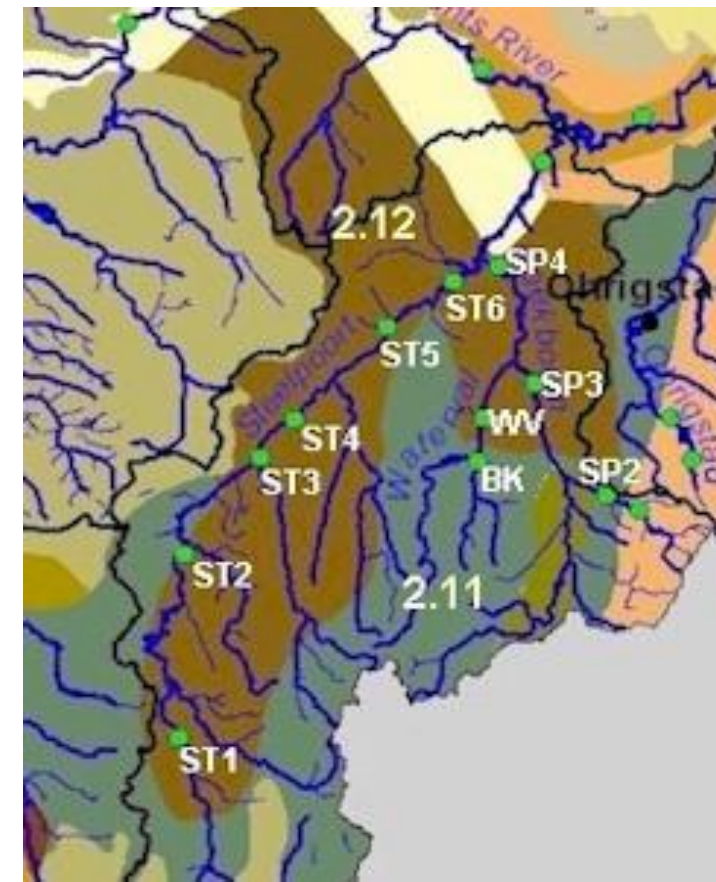
TABLE OF CONTENTS

1.	OLIFANTS RIVER CATCHMENT	2
1.1.	ECOREGION 2.11 & 2.12	2
1.2.	ECOREGION 3.02 & 3.04	2
1.3.	ECOREGIONS 7.02, 7.03 & 7.04	3
1.4.	ECOREGIONS 4.03 & 4.05	3
1.5.	ECOREGIONS 5.05 & 5.06	3
1.6.	ECOREGION 2.14 & 2.15	3
1.7.	ECOREGIONS 2.08, 2.09 & 2.10	4
2.	LETABA RIVER CATCHMENT	4
2.1.	ECOREGIONS 2.15 GROOT LETABA HEADWATERS	4
2.1.1.	Broederstroom, Politsi River, Debengeni River	4
2.1.2.	Groot Letaba River	4
2.2.	ECOREGIONS 4.03, 4.04 & 5.05 POLITSI RIVER BELOW MAGOEBASKLOOF DAM, LETSITELE AND THABINA RIVERS 5	
2.2.1.	Politsi River	5
2.2.2.	Letsitele River (upper)	5
2.2.3.	Letsitele River (lower)	5
2.2.4.	Thabina River	5
2.3.	ECOREGIONS 5.05 & 5.02 GROOT LETABA RIVER BETWEEN TZANEEN DAM AND KNP	5
2.3.1.	Groot Letaba River (upper)	6
2.3.2.	Groot Letaba River (middle)	6
2.3.3.	Ecoregions 5.03 Molototsi and Nsama Rivers	6
2.3.4.	Nsama River (upper)	6
2.3.5.	Nsama River (lower)	6
2.3.6.	Molototsi River (upper)	7
2.3.7.	Molototsi River (lower)	7
2.4.	ECOREGIONS 5.02 & 5.03 KLEIN LETABA RIVER	7
2.4.1.	Klein Letaba River (upper)	7
2.4.2.	Klein Letaba River (lower)	7
2.5.	ECOREGIONS 5.01, 5.07 & 6.01 LETABA IN THE KRUGER NATIONAL PARK	8
2.5.1.	Letaba River (upper in KNP)	8
2.5.2.	Letaba River lower in (KNP)	8
3.	REFERENCE	8

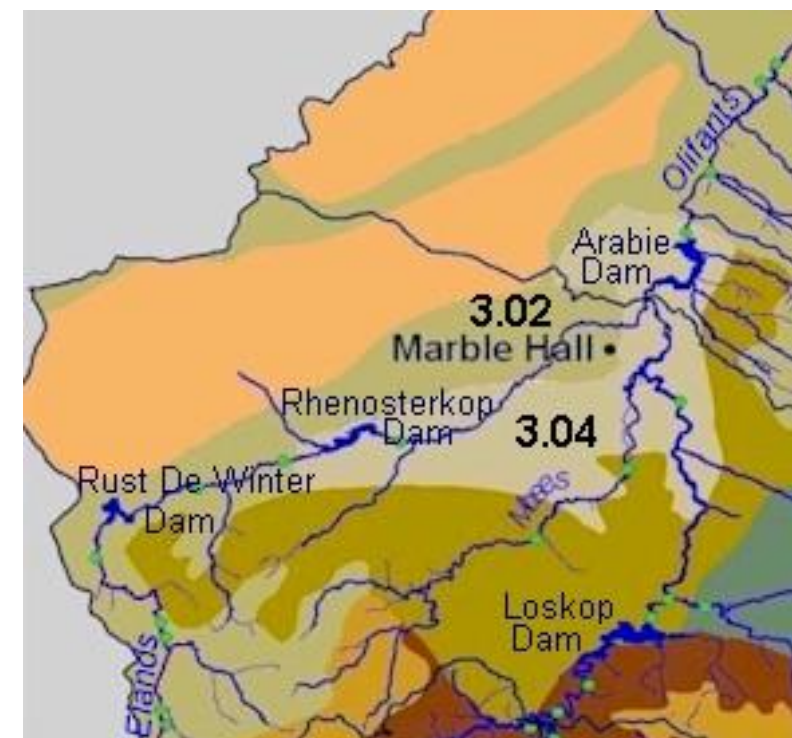
1. OLIFANTS RIVER CATCHMENT



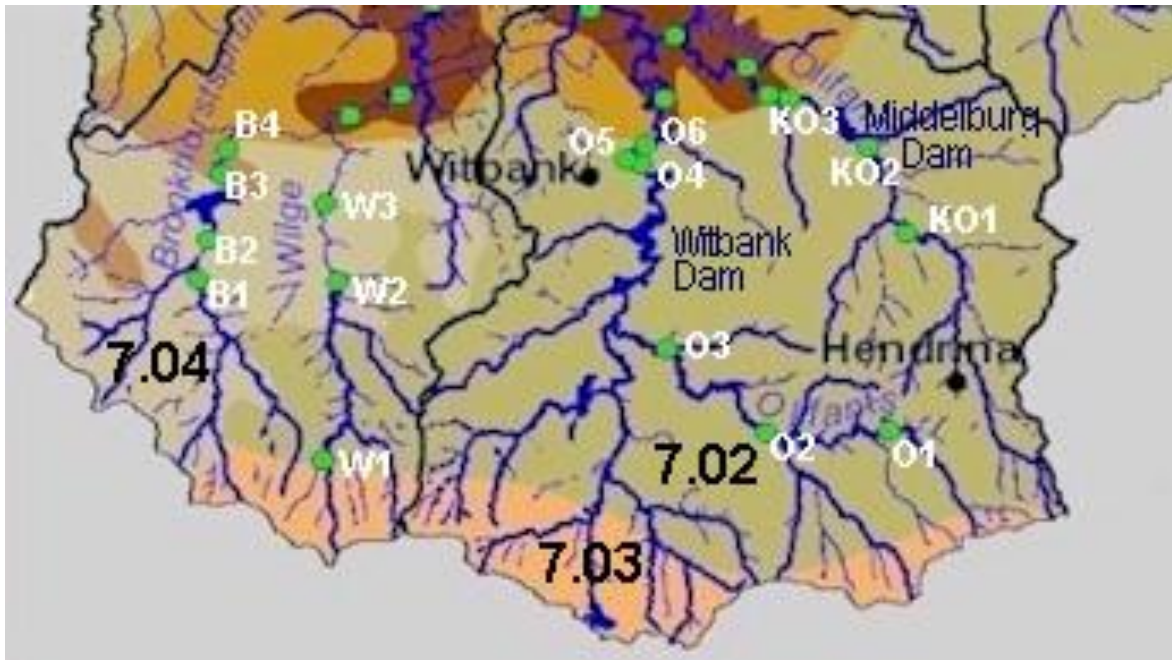
1.1. ECOREGION 2.11 & 2.12



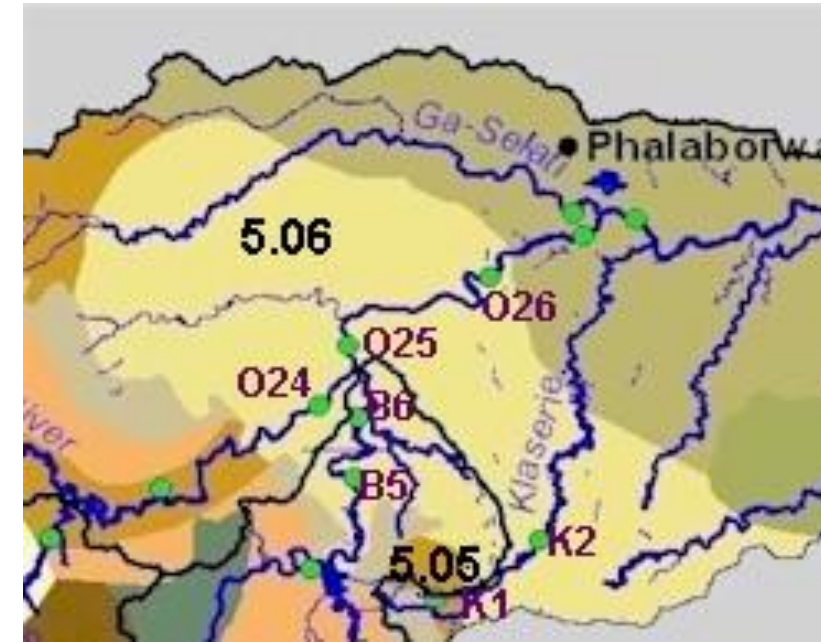
1.2. ECOREGION 3.02 & 3.04



1.3. ECOREGIONS 7.02, 7.03 & 7.04



1.5. ECOREGIONS 5.05 & 5.06



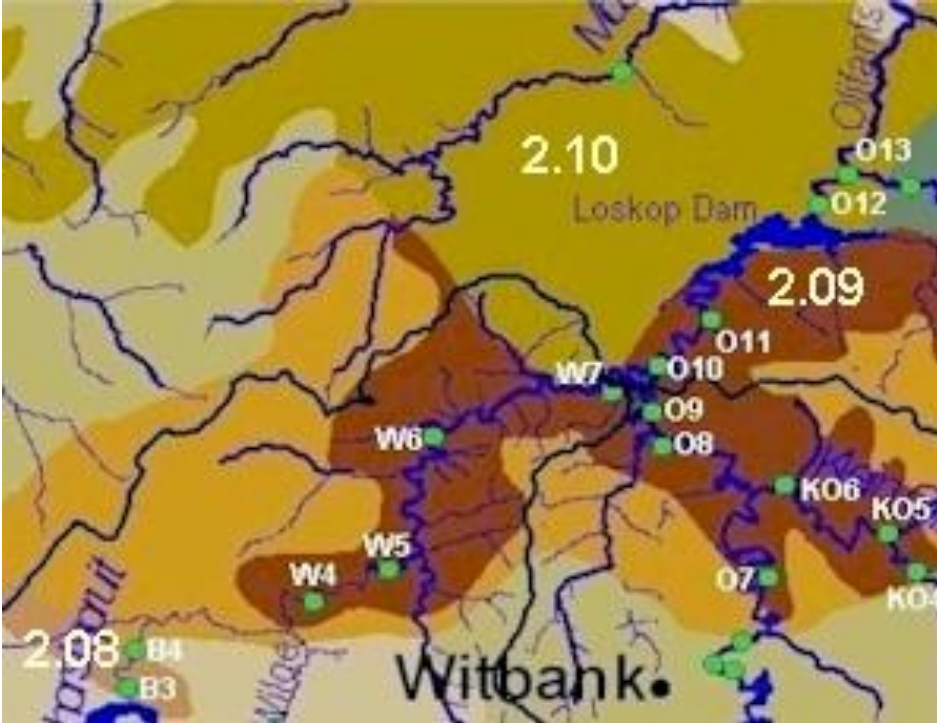
1.4. ECOREGIONS 4.03 & 4.05



1.6. ECOREGION 2.14 & 2.15



1.7. ECOREGIONS 2.08, 2.09 & 2.10



2.1. ECOREGIONS 2.15 GROOT LETABA HEADWATERS



2.1.1. Broederstroom, Politsi River, Debengeni River



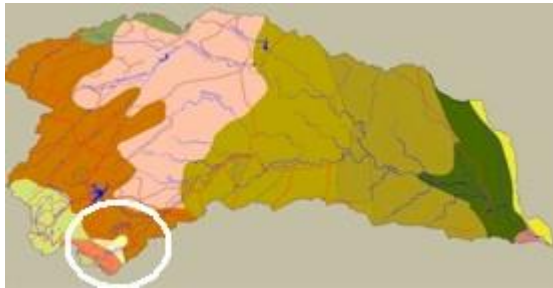
2. LETABA RIVER CATCHMENT



2.1.2. Groot Letaba River



2.2. ECOREGIONS 4.03, 4.04 & 5.05 POLITSI RIVER BELOW MAGOEBASKLOOF DAM, LETSITELE AND THABINA RIVERS



2.2.1. Politsi River



2.2.2. Letsitele River (upper)



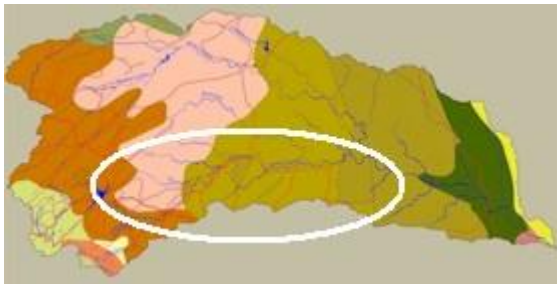
2.2.3. Letsitele River (lower)



2.2.4. Thabina River



2.3. ECOREGIONS 5.05 & 5.02 GROOT LETABA RIVER BETWEEN TZANEEN DAM AND KNP



2.3.1. Groot Letaba River (upper)



2.3.2. Groot Letaba River (middle)



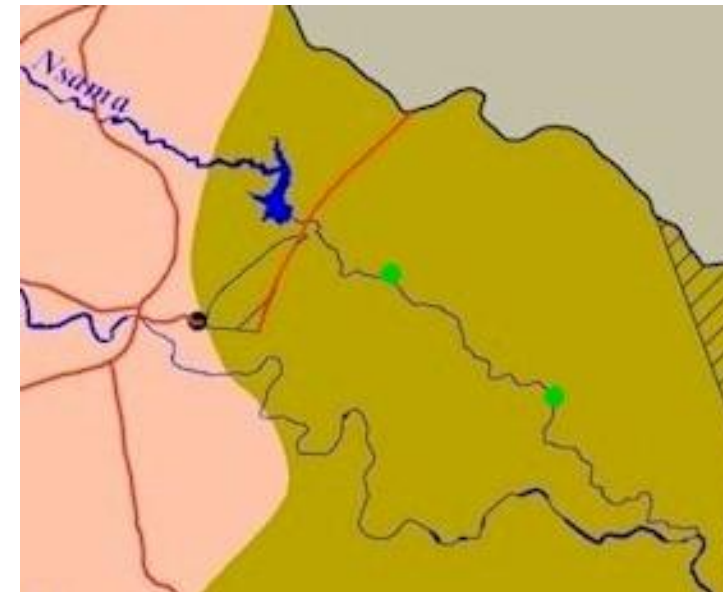
2.3.3. Ecoregions 5.03 Molototsi and Nsama Rivers



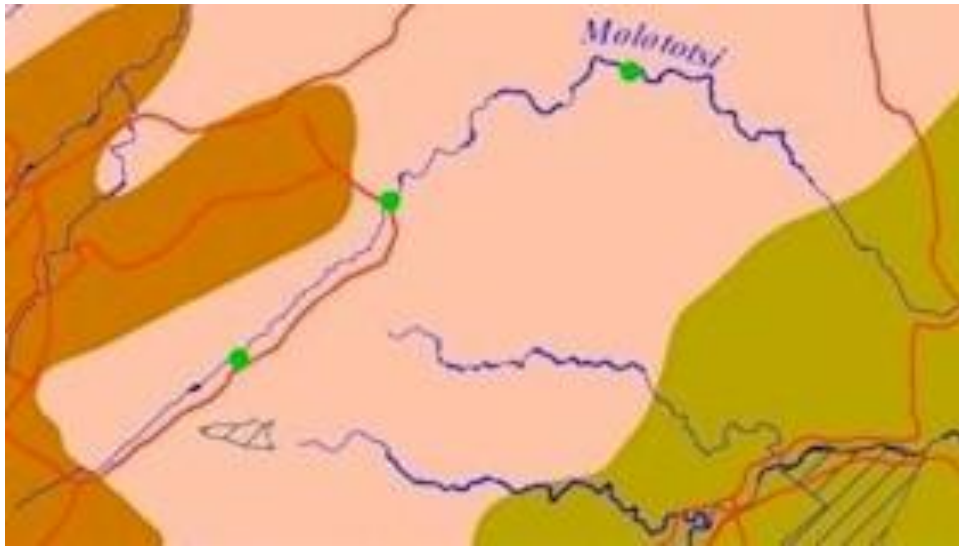
2.3.4. Nsama River (upper)



2.3.5. Nsama River (lower)



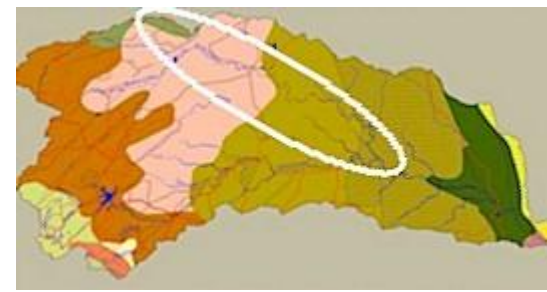
2.3.6. Molototsi River (upper)



2.3.7. Molototsi River (lower)



2.4. ECOREGIONS 5.02 & 5.03 KLEIN LETABA RIVER



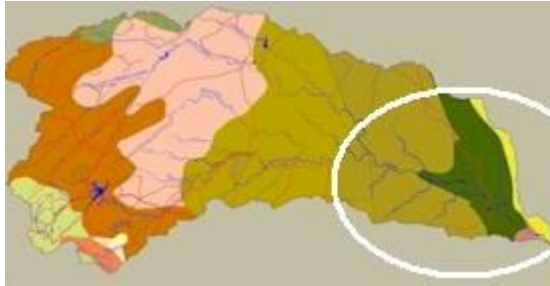
2.4.1. Klein Letaba River (upper)



2.4.2. Klein Letaba River (lower)



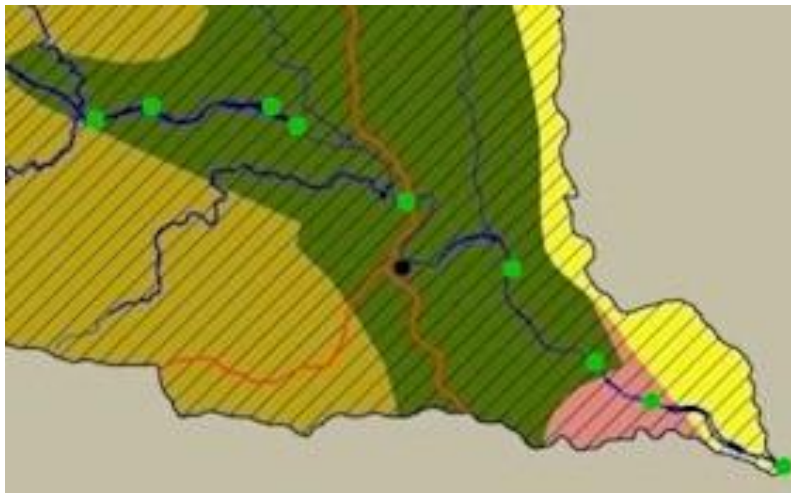
2.5. ECOREGIONS 5.01, 5.07 & 6.01 LETABA IN THE KRUGER NATIONAL PARK



2.5.1. Letaba River (upper in KNP)



2.5.2. Letaba River lower in (KNP)



3. REFERENCE

The above maps indicating the ecoregions were obtained from the Department of Water Affairs and Forestry website and can be found by following the links below.

Olifants River Catchment:

http://www.dwaf.gov.za/iwqs/rhp/state_of_rivers/state_of_crocsabieolif_01/olif_eco.html

Letaba River Catchment:

http://www.dwaf.gov.za/iwqs/rhp/state_of_rivers/state_of_letluv_01/letaba.html