



environmental affairs

Department:
Environmental Affairs
REPUBLIC OF SOUTH AFRICA

NATIONAL DOMESTIC WASTE COLLECTION STANDARDS

**4TH WASTE KHORO
DURBAN**

BACKGROUND WASTE COLLECTION STANDARDS

- Historically there were no standards for waste collection as well as a policy for the provision of basic refuse removal for indigent households.



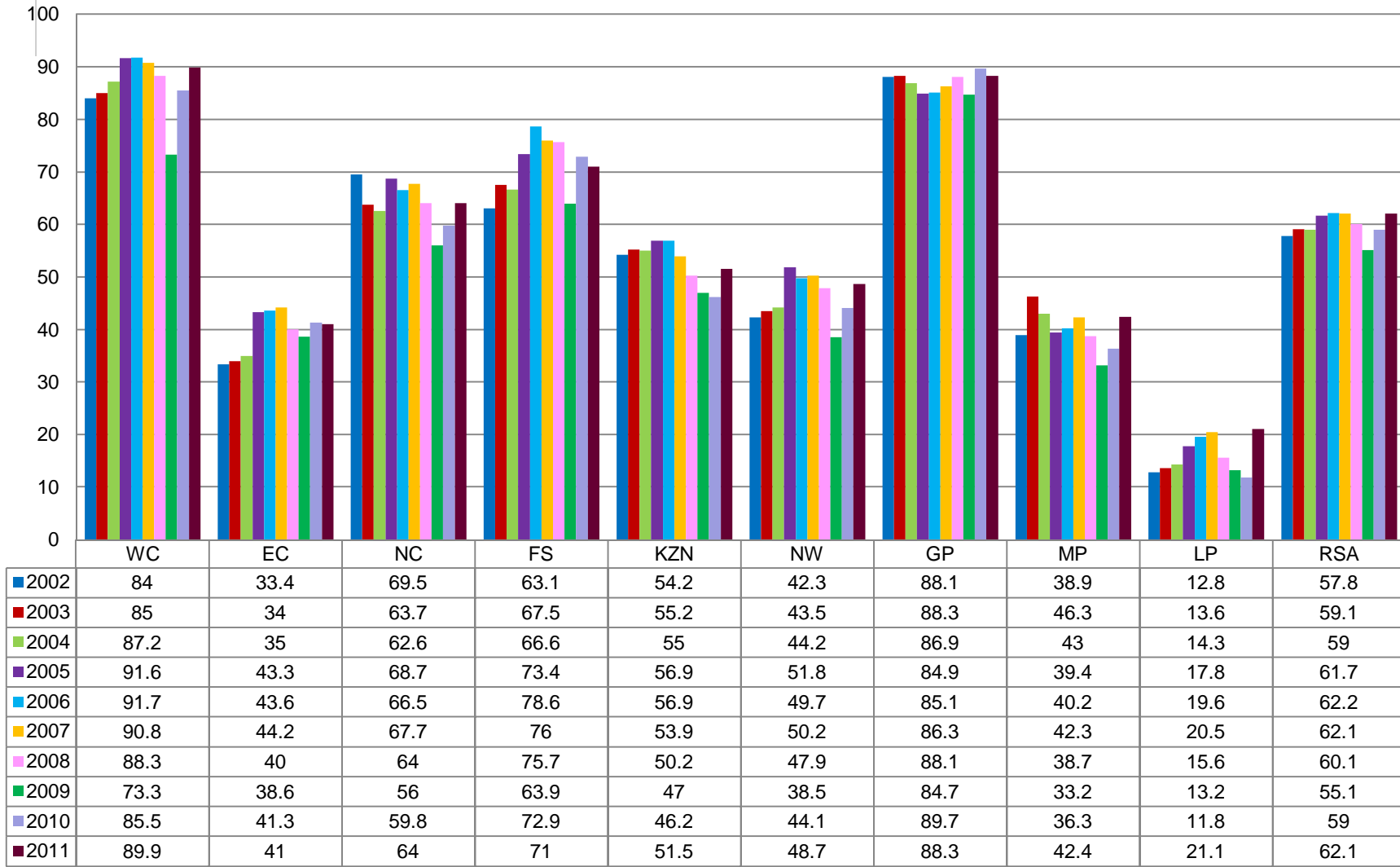
- The DPLG then set out reporting protocols [kerbside weekly collection].
- These were the basis under which Stats SA collected data.

BACKGROUND

- As part of the Outcomes based approach, the target for 2014 as it appears in both Outcomes 10 and 9 on waste services is that 75% of households should be receiving waste services.
- Census 2011 data shows that waste services are currently at 61.2%, based on weekly kerbside collection



CURRENT STATUS



NATIONAL DOMESTIC WASTE COLLECTION STANDARDS

- They are based on the Constitution and NEMA
- Guided by protection to the Environment and to the Health and Safety of inhabitants
- The Standards (GG NO.33935 GN No. 21) came into effect on the 1 February 2011



NATIONAL DOMESTIC WASTE COLLECTION STANDARDS

- They define a waste service level.
- Based on the following principles:
 - Equity
 - Affordability and availability of resources within municipalities
 - Clarity and ease at which the standards can be implemented
 - Practicality
 - Community participation in design of applicable and appropriate collection systems.



NATIONAL DOMESTIC WASTE COLLECTION STANDARDS

- Collection
 - Separation at source
 - Collection of recyclable waste
 - Receptacles
 - Practicality
 - Bulk containers
 - Communal collection points
 - Frequency of collection



NATIONAL DOMESTIC WASTE COLLECTION STANDARDS

- Drop of centres of recyclables
- Collection vehicles
- Health and safety
- Communication, awareness creation and complaints
- Waste Collection customer service standards for Kerbside collection
- General



NATIONAL DOMESTIC WASTE COLLECTION STANDARDS

SERVICE LEVEL	APPLICABILITY
a. On-site appropriate and regularly supervised disposal	remote rural areas with low density settlements and farms
b. Community transfer to central collection point	medium density settlements
c. Organised transfer to central collection points and/or kerbside collection	high density settlements
d. Mixture of b and c	medium to high density settlements.

NDWCS VS STATS SA INDICATORS

NATIONAL DOMESTIC WASTE COLLECTION STANDARDS

On-site appropriate and regularly supervised disposal	Community transfer to central collection point	Organised transfer to central collection points and/or kerbside collection.	Mixture of b and c above for the medium to high density settlements.
---	--	---	--

**S
T
A
T
S
S
A**

a. Removed by local authority/private company at least once a week.

b. Removed by local authority/private company less often

This fits with the Standards.

The Standards recommend a weekly collection for non-recyclable waste. However, this depends on whether this is collection from households or from central collection points. If it is from central collection points, then this would qualify as an acceptable service level according to the standards. However if it is from households, then it doesn't.

NDWCS VS STATS SA INDICATORS

NATIONAL DOMESTIC WASTE COLLECTION STANDARDS

On-site appropriate and regularly supervised disposal

Community transfer to central collection point

Organised transfer to central collection points and/or kerbside collection.

Mixture of b and c above for the medium to high density settlements.

**S
T
A
T
S

S
A**

c. Communal refuse dump

This talks to disposal not collection. Prior to disposal there is a need to understand the collection method of such waste. This aspect can thus not be used to measure a waste service.

d. Own refuse dump

On site disposal is acceptable. However it should be done properly and regularly supervised.

NDWCS VS STATS SA INDICATORS

NATIONAL DOMESTIC WASTE COLLECTION STANDARDS

On-site appropriate and regularly supervised disposal	Community transfer to central collection point	Organised transfer to central collection points and/or kerbside collection.	Mixture of b and c above for the medium to high density settlements.
---	--	---	--

S
T
A
T
S
S
A

No rubbish disposal

This item also talks to disposal not collection; hence it is not appropriate to use to determine a waste service level.

Other

PROCESS OF REACHING THE 75% TARGET BY 2014

Stakeholder engagements

DATE	PARTICIPANTS	PURPOSE OF MEETING
28/08/13	COGTA MISA Presidency (Outcome 10)	Discuss possible interventions and the roles and responsibilities of each.
30/08/13	COGTA MISA Presidency Treasury SALGA HODs from provincial Environment Departments and COGTA Municipal Managers	
27/08 & 02/09	DEA Stats SA	Discuss the alignment of Stats SA data with the NDWCS

OUTCOMES – ALIGNMENT OF NDWCS AND STATS SA DATA

- Assumptions:
 - Solid waste was removed by the municipality or private company, or community members contracted by the municipality at least once per week or less often;
 - All households in rural farm areas that had on-site disposal
 - A third of households in tribal areas with on-site disposal.
(This assumption was necessitated by the fact that little information is known about the remoteness of households in this geographical category).



ALIGNMENT OF THE NDWCS AND STATS SA DATA

ASSUMPTIONS	GHS 2011	GHS 2012	CENSUS 2011
Solid waste was removed at least once per week or less often;	73.7	73.7	73.3
Solid waste was removed at least once per week	71.5	71.9	71.8

DEA and Stats SA will work together on the questions to be asked in future GHS questionnaires to ensure alignment with the NDWCS.

OUTCOMES – REPORTING ON WASTE SSERVICE BACKLOGS

- Municipalities are responsible for the provision of waste services
- DEA is responsible for:
 - policy development
 - National Domestic Waste Collection Standards
 - The Policy for the Provision of Basic Refuse Removal to Indigent Households
 - The Municipal Waste Sector Plan
 - Giving municipalities support.
 - Development of Integrated Waste Management Plans,
 - Training and
 - Development of tools.
 - Infrastructure and equipment



OUTCOMES – REPORTING ON WASTE SERVICE BACKLOGS

- Provincial Environmental and COGTA Departments will:
 - Establish a forum to enable reporting on waste services backlogs on a regular basis and in alignment with the NDWCS.
 - This forum will feed information into the Working Group IX.
- Working Group IX:
 - Further discuss the issues raised at the meetings mentioned.
 - Facilitate further reporting based on information from the provincial forum above.





environmental affairs

Department:
Environmental Affairs
REPUBLIC OF SOUTH AFRICA

THANK YOU!

MALCOLM MOGOTSI

(012) 310 3155

MMOGOTSI@ENVIRONMENT.GOV.ZA