



agriculture
& environmental affairs

Department:
Agriculture
& Environmental Affairs
PROVINCE OF KWAZULU-NATAL

Developments in waste management in KwaZulu-Natal

Mrs. Heather Sheard

Waste and Chemicals Management

14 October 2013

GIBELA UMKHUMBI OLWA NOBUBHA



agriculture
& environmental affairs

Department:
Agriculture
& Environmental Affairs
PROVINCE OF KWAZULU-NATAL

- Waste Management Officers
 - 32 designated Waste Management Officers (out of 61 municipalities)
 - KZN Waste Management Officers Forum – attendance around 20 municipalities
 - Six out of 10 district municipalities have active District WMO Forums



agriculture
& environmental affairs

Department:
Agriculture
& Environmental Affairs
PROVINCE OF KWAZULU-NATAL

- Integrated Waste Management Planning
 - Six district municipalities and 22 local municipalities have developed IWMPs
 - Evaluating 12 municipal IWMPs for compliance with the Waste Act and the Guidelines – Evaluation Reports to be finalised by end November 2013
 - KZN Integrated Waste Management Plan has been finalised



agriculture
& environmental affairs

Department:
Agriculture
& Environmental Affairs
PROVINCE OF KWAZULU-NATAL

- Waste Collection
 - Core indicator in Outcome 9 & 10
 - Challenges in data collection from municipalities
 - Reliant on information from Stats SA (currently Census 2011 data)



agriculture
& environmental affairs

Department:
Agriculture
& Environmental Affairs
PROVINCE OF KWAZULU-NATAL

KZN Waste Service Provision (Census 2011)

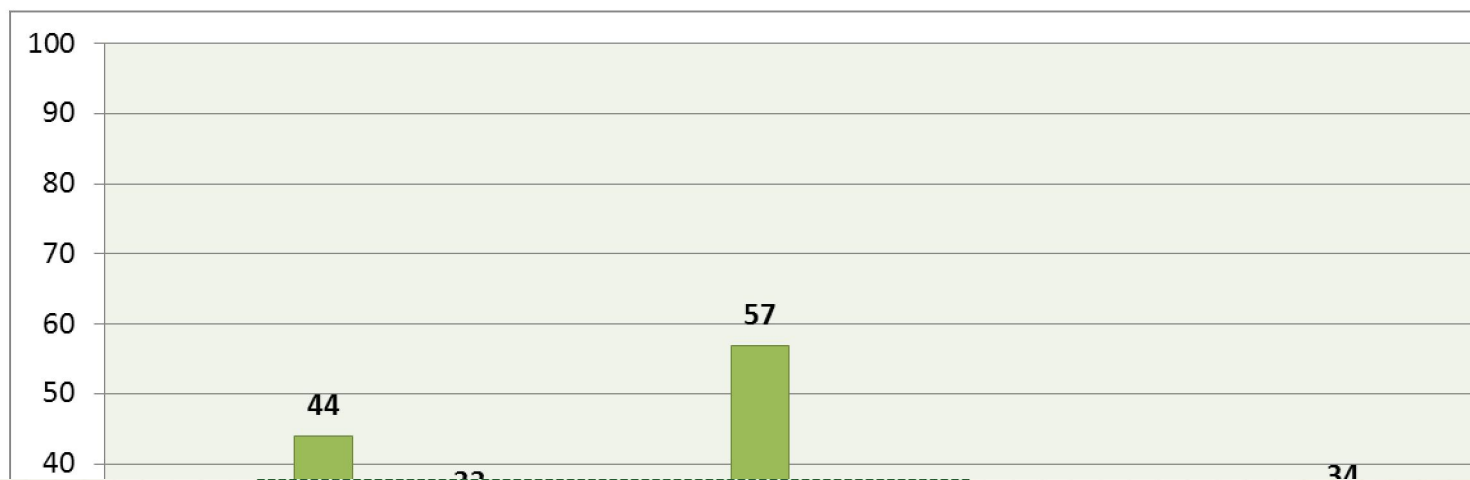
Type of waste service	No. of households	h



agriculture
& environmental affairs

Department:
Agriculture
& Environmental Affairs
PROVINCE OF KWAZULU-NATAL

KZN households with weekly waste collection service per district



GIBELA UMKHUMBI OLWA NOBUBHA



agriculture
& environmental affairs

Department:
Agriculture
& Environmental Affairs
PROVINCE OF KWAZULU-NATAL

- Waste Management Licensing
 - Province responsible for licensing of general waste facilities
 - Receiving approximately 40 applications per annum
 - Finalising approximately 5-10 applications per quarter



agriculture
& environmental affairs

Department:
Agriculture
& Environmental Affairs
PROVINCE OF KWAZULU-NATAL

- Compliance Monitoring and Enforcement
 - Auditing of waste management facilities (approximately 6 facilities per quarter)
 - Provincial landfill site status quo report 2012
 - Graphical (“traffic light”) representation of compliance
 - 16 unlicensed landfill sites
 - Compliance good in larger municipalities with fewer sites
 - Compliance low in rural municipalities with many sites



**agriculture
& environmental affairs**

Department:
Agriculture
& Environmental Affairs
PROVINCE OF KWAZULU-NATAL

uMzinyathi District Municipality

	Licence	Operating Plan	Access	Register	Access control	Liner	Controlled disposal	Cover	Equipment	Personnel	Leachate management	Stormwater management	Groundwater monitoring	Audits	Monitoring committee	Nuisance	Recycling facility
Glencoe Landfill Site	Green	Green	Green	Green	Green	Red	Green	Yellow	Green	Green	Green	Yellow	Green	Green	Green	Green	Green
Nondweni Landfill Site	Green	Red	Red	Red	Red	Red	Red	Red	Red	Red	Red	Red	Red	Red	Red	Red	Red
Pomeroy Landfill Site	Green	Red	Green	Green	Green	Red	Green	Red	Red	Yellow	Red	Red	Red	Yellow	Red	Red	Green



agriculture
& environmental affairs

Department:
Agriculture
& Environmental Affairs
PROVINCE OF KWAZULU-NATAL

- Provincial Pollution and Waste Task Teams
 - Recycling Task Team
 - Animal Waste Task Team
 - Special Wastes Task Team



agriculture
& environmental affairs

Department:
Agriculture
& Environmental Affairs
PROVINCE OF KWAZULU-NATAL

CALL CENTRE: 0800 000 996

**THANK YOU
SIYABONGA**