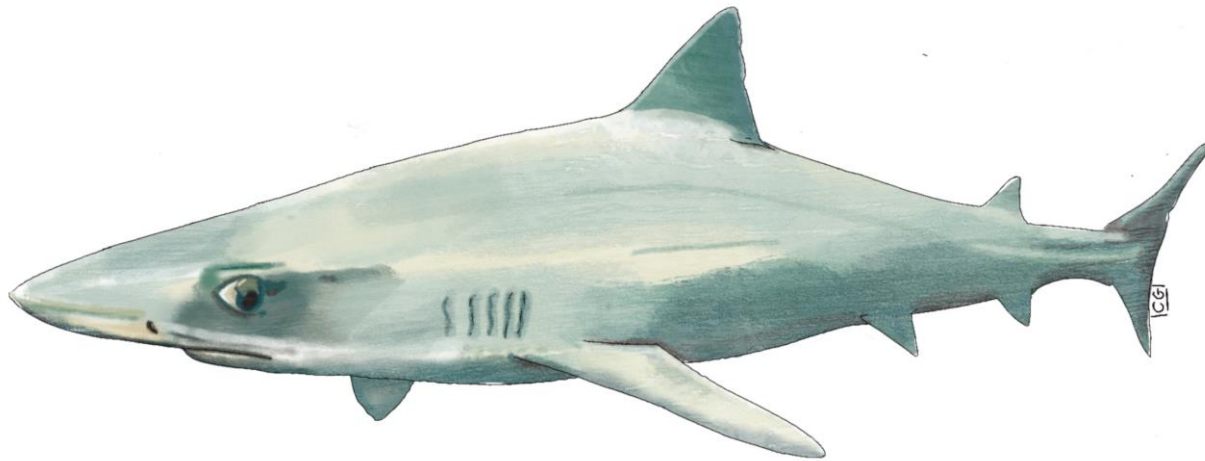




A CENTURY OF SHARK FISHING IN SOUTH AFRICA

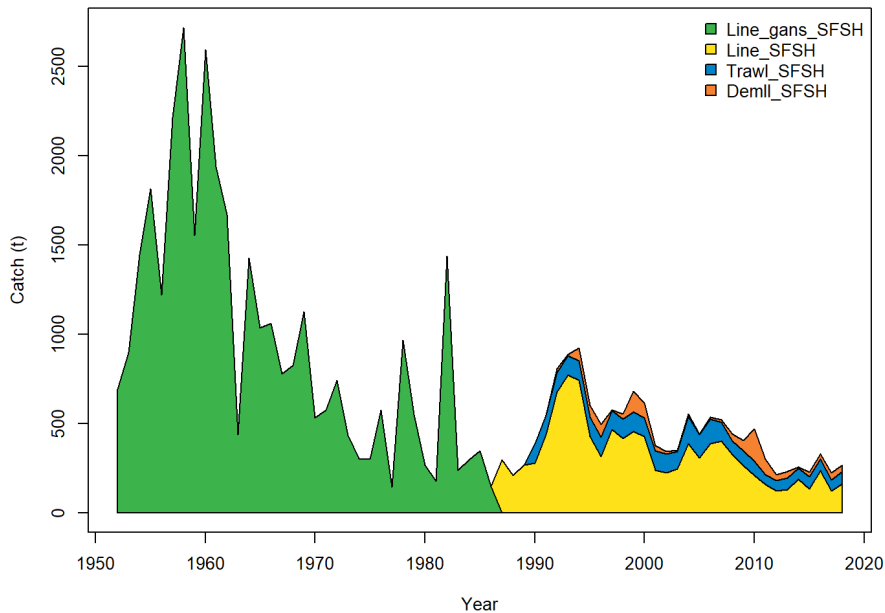


environment, forestry
& fisheries

Department:
Environment, Forestry and Fisheries
REPUBLIC OF SOUTH AFRICA



Shark fishing has a long tradition in South Africa



- Traditional shark fishery has operated >100 years
- Longline targeting sharks introduced in the 1990s
- Increased shark targeting in other fisheries mid 2000s

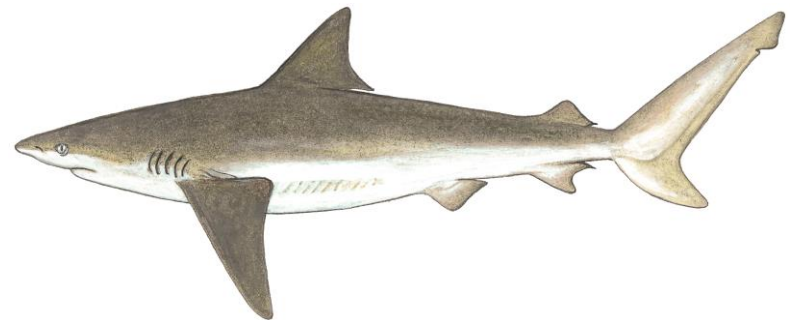
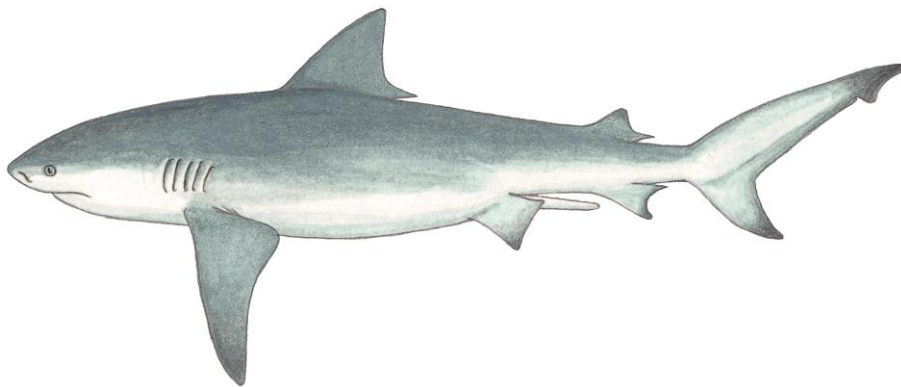
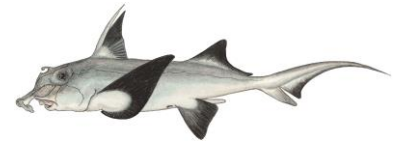
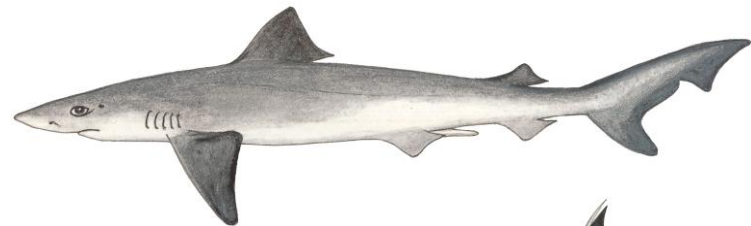


Fig 1. Time-series of estimated catch in metric tons (t) for soupfin sharks *Galeorhinus galeus* (1952-2018) showing the linefish historical data (Line_gans_SFSH), commercial linefish data (Line_SFSH), trawl catch data (Trawl_SFSH) and demersal shark longline catch data (DemLL_SFSH).

Shark fishing in South Africa today

Target Fisheries

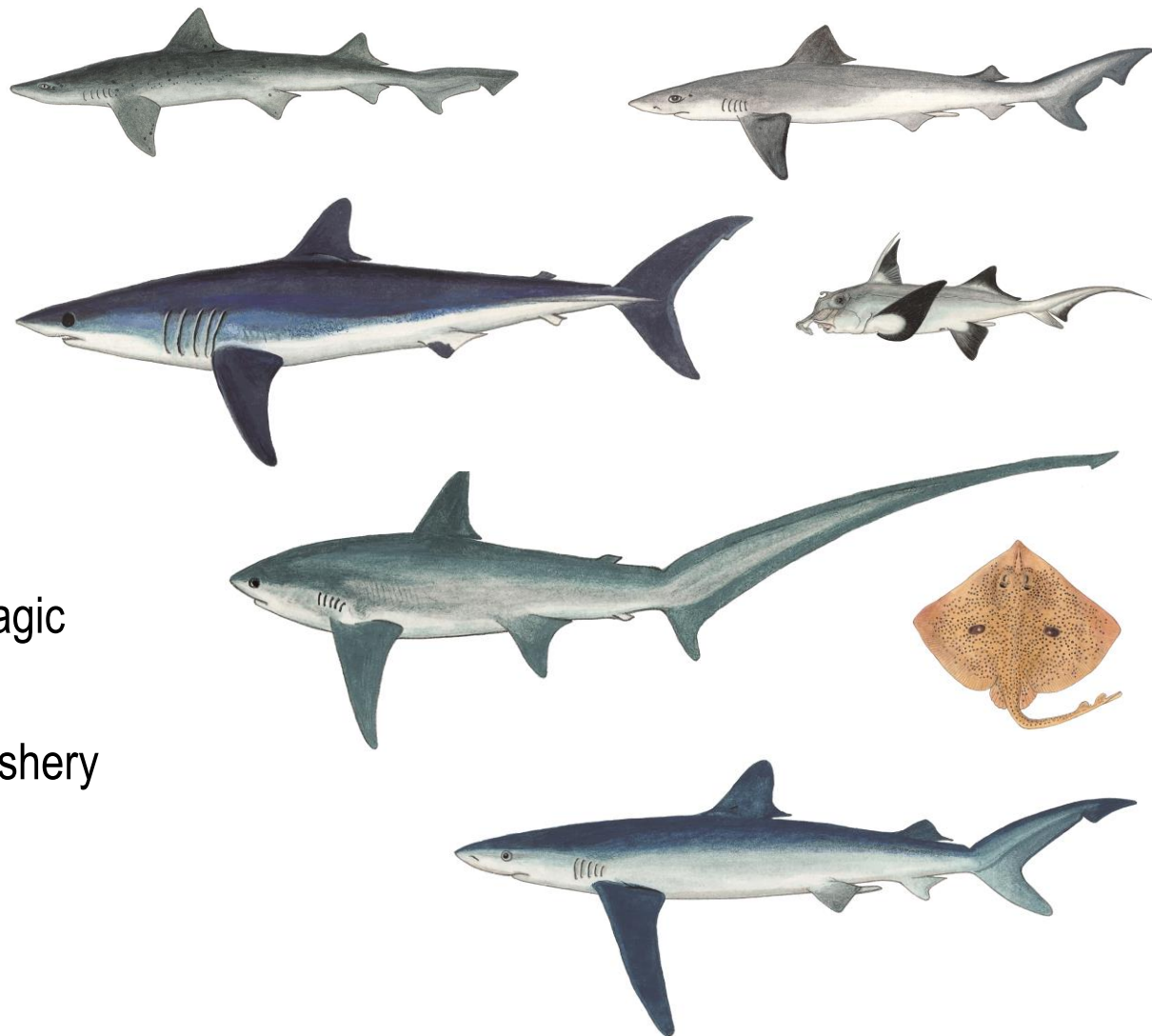
- Demersal shark longline
- Commercial linefishery
- Beach-seine and gillnet fisheries
- Recreational linefishery
- Bather protection fishery



Continued...

By-catch fisheries

- Inshore trawl fishery
- Offshore trawl fishery
- Small pelagic fishery
- Hake longline fishery
- Prawn trawl fishery
- Tuna and swordfish pelagic longline fishery
- Pelagic shark longline fishery



environment, forestry
& fisheries

Department:
Environment, Forestry and Fisheries
REPUBLIC OF SOUTH AFRICA

Illustrations from: Heemstra, Phillip C., and Elaine Heemstra. Coastal fishes of southern Africa. NISC (PTY) LTD, 2004.



Shark management in the large pelagic longline fishery

Permit conditions:

- CITES Appendix II species are prohibited
- In addition: dusky sharks *C. obscurus* are prohibited
- Shark and Large pelagic fishery amalgamated
- PUCL (2000 t dressed weight)
- No wire traces allowed
- Finning prohibited
- Sharks designated as by-catch

* South Africa is internationally recognized at RFMOS for best practices and submission of high quality information

Science based management

- Movement and telemetry
- Biology
- Heavy metal contamination of shark meat
- MPAs
- Climate change
- Genetics
- Assessments

African Journal of Marine Science 2015, 37(2): 233–248
Printed in South Africa — All rights reserved

Copyright © NISC (Pty) Ltd
AFRICAN JOURNAL OF
MARINE SCIENCE
ISSN 1814-232X EISSN 1814-2338
<http://dx.doi.org/10.2989/1814232X.2015.1044471>

The current status and management of South Africa's chondrichthyan fisheries[§]

C da Silva^{1,2*}, AJ Booth³, SFJ Dudley^{1,4}, SE Kerwath^{1,2,5}, SJ Lamberth^{1,6}, RW Leslie^{1,2}, ME McCord⁷, WHH Sauer³ and T Zweig⁷

African Journal of Marine Science 2010, 32(3): xxx–xxx
Printed in South Africa — All rights reserved

Copyright © NISC (Pty) Ltd
AFRICAN JOURNAL OF
MARINE SCIENCE
ISSN 1814-232X EISSN 1814-2338
[doi: 10.2989/1814232X.2010.540777](http://dx.doi.org/10.2989/1814232X.2010.540777)

Short Communication

First documented southern transatlantic migration of a blue shark *Prionace glauca* tagged off South Africa

C da Silva^{1*}, SE Kerwath^{1,2}, C Wilke¹, M Mejer² and SJ Lamberth^{1,4}

natureresearch

N Acid-base adjustments and first evidence of denticle corrosion caused by ocean acidification conditions in a demersal shark species

Jacqueline Dziergwa¹, Sarika Singh², Christopher R. Bridges³, Sven E. Kerwath^{1,4}, Joachim Enax² & Lutz Auerwald^{1,4*}

Fisheries Research 206 (2018) 292–295



Contents lists available at ScienceDirect

Fisheries Research

journal homepage: www.elsevier.com/locate/fishes



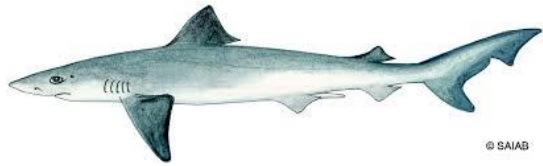
Short communication

DNA barcoding of chondrichthyans in South African fisheries

Gibbs Kuguru^a, Simo Maduna^a, Charlene da Silva^b, Enrico Gennari^{c,d,e}, Clint Rhode^a, Aletta Bester-van der Merwe^{a*}



Soupin shark stock assessment is very pessimistic



Data rich species – requires details on biology, catch data and abundance data

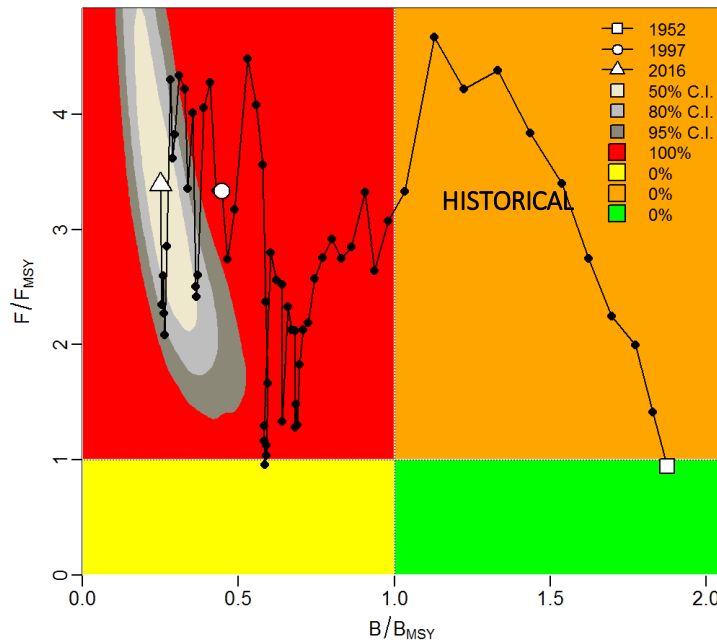


Figure 2. Kobe plot the stock status estimates of fishing mortality relative to F_{MSY} and biomass relative to B_{MSY} for soupfin sharks *Galeorhinus galeus*

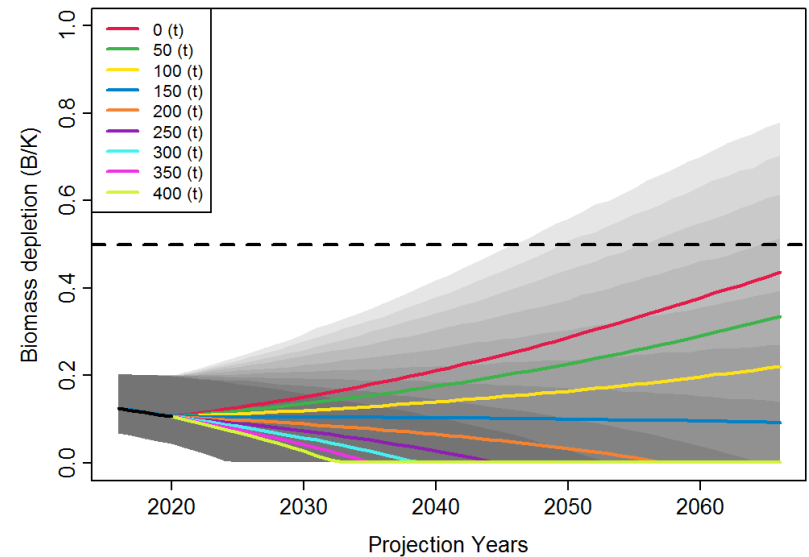
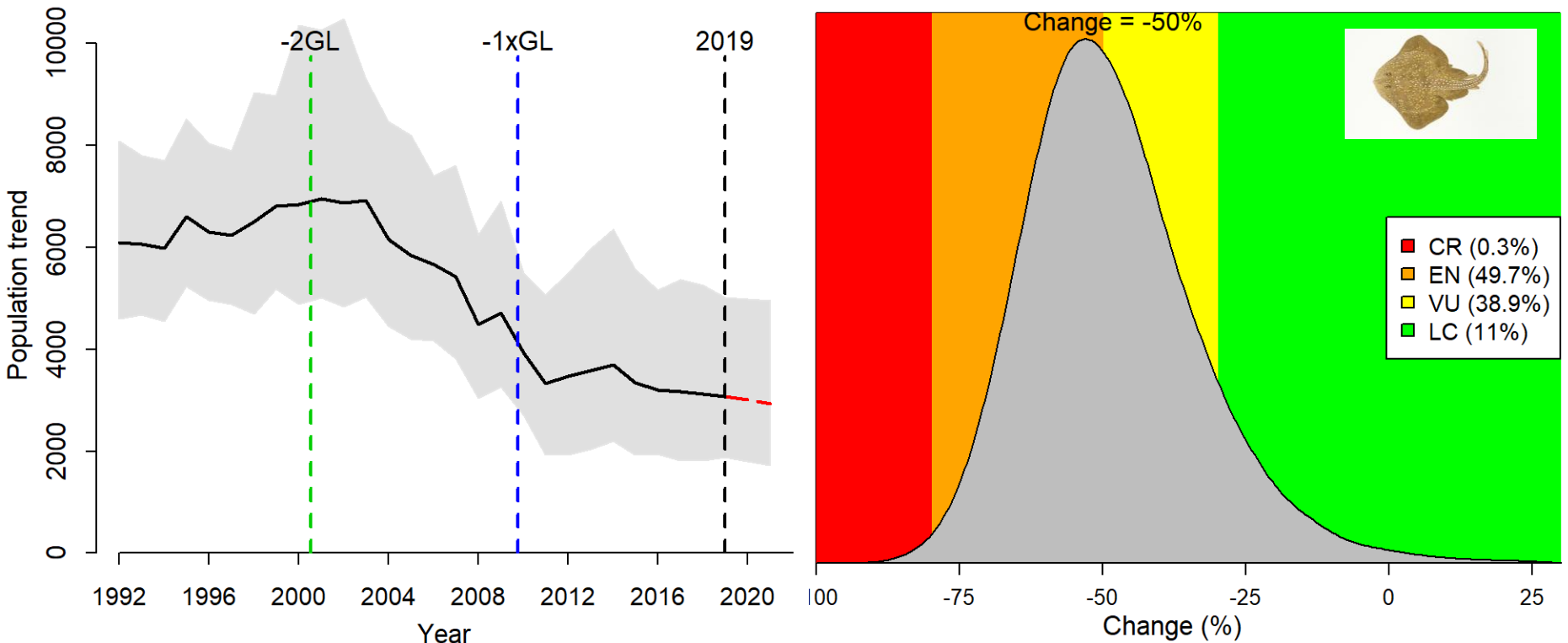


Figure 3. Projections based on JABBA Base Case for Soupfin sharks

Risk assessment are available for data poor species



- Data poor species – very limited data requirements to show a change in abundance
- Risk assessments completed for 21 species and used for 2019-2020 IUCN red list assessments

THANK YOU!

Dr Charlene da Silva on behalf of expert panel,
Fisheries Research and Development
Department Environmental Affairs,
Forestry and Fisheries
Cape Town, South Africa
Website: <http://www.environment.gov.za>

Thank You



environment, forestry
& fisheries

Department:
Environment, Forestry and Fisheries
REPUBLIC OF SOUTH AFRICA

